

X Coordinate tables

Using the traditional robust BAZUS design, the range of manual coordinate tables are operated by trapezoidal spindles and dovetailed guides. Made from high quality stabilized cast iron, this product range comprises single axis (X) slide units.

Multifunctional lightweight single axis X table with rotary basis (180°) for application as linear unit

Designed for precision work where an angular regulation is necessary. The TP Series of linear units with rotary basis is optimal for positioning, vertical drilling, horizontal drilling, welding, and any other mechanical application where precise position control is required.

The solid and robust design allows a large number of jobs to be carried out while maintaining positioning precision and repeatability in any type of linear positioning. An extraordinary coordinate table in the industry that guarantees a long service life.

All the elements of the TP Series are made of cast iron (high quality GG25 stabilized gray cast iron), which gives it extraordinary mechanical rigidity.

Technical details:

- Displacement by dovetails with clearance adjustment (all surfaces grinding finishment)
- Millimeter rulers and matte chrome vernier, with dial and zero adjustment.
- Trapezoidal threaded spindle with adjustable spindle nut.
- Locking brake to fix table X in its working position.

The TP series offers 5 models of coordinate tables of different sizes, from 100 to 500 mm of useful travelling, in order to adapt to the needs of the application and offer flexibility and adaptation to different uses and applications: all types of machine tools , drills, grinding machines, mortising machines, lathes, optical and laser systems, positioning of work heads, adjustment and position regulation of parts in presses, displacement for welding cutting, industrial engraving.

BAZUS commitment:

- The highest quality, robust and durable coordinate tables on the market.
- Tables with the finest linear positioning and without spindle-play.
- Coordinate tables made 100% in Europe.

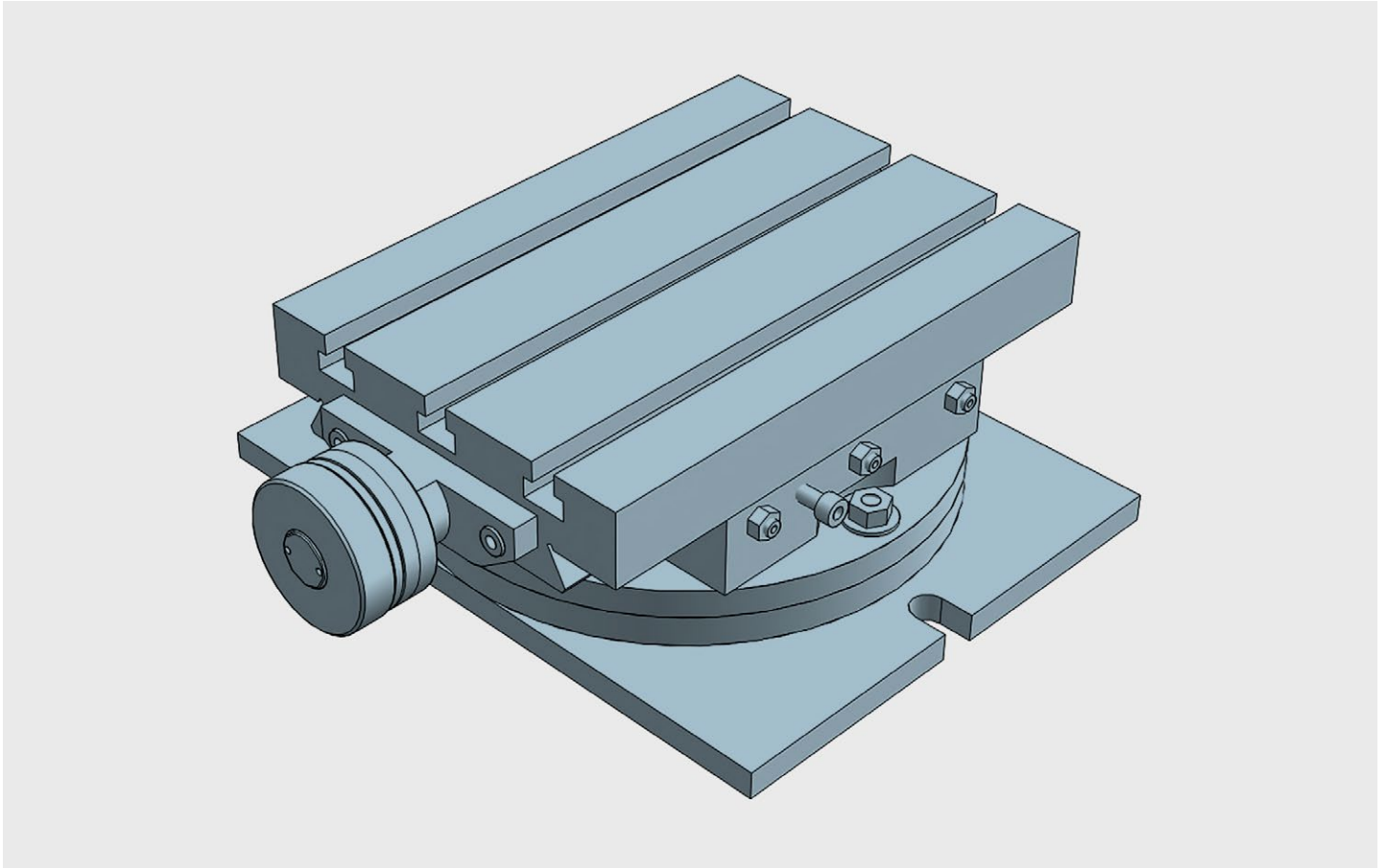
Customized solutions:

BAZUS, your trusted partner for high-performance positioning systems, provides the right solution for any application, specifically designed or customized to the characteristics and requirements of your activity.

Whatever your coordinate table, thanks to more than 100 years of continuous improvement, you will have a partner who offers solutions to all your positioning and movement requirements with many different applications available worldwide.

The first guarantee, for 5 years:

Why settle for a 2 year warranty? At BAZUS we believe that, if the coordinate tables do not expire at this time, neither should the professional attention received. So once again we want to change the rules. 5 year guarantee.

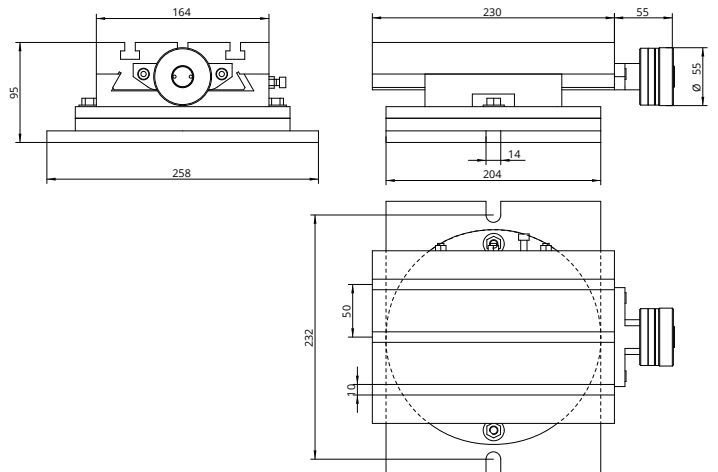


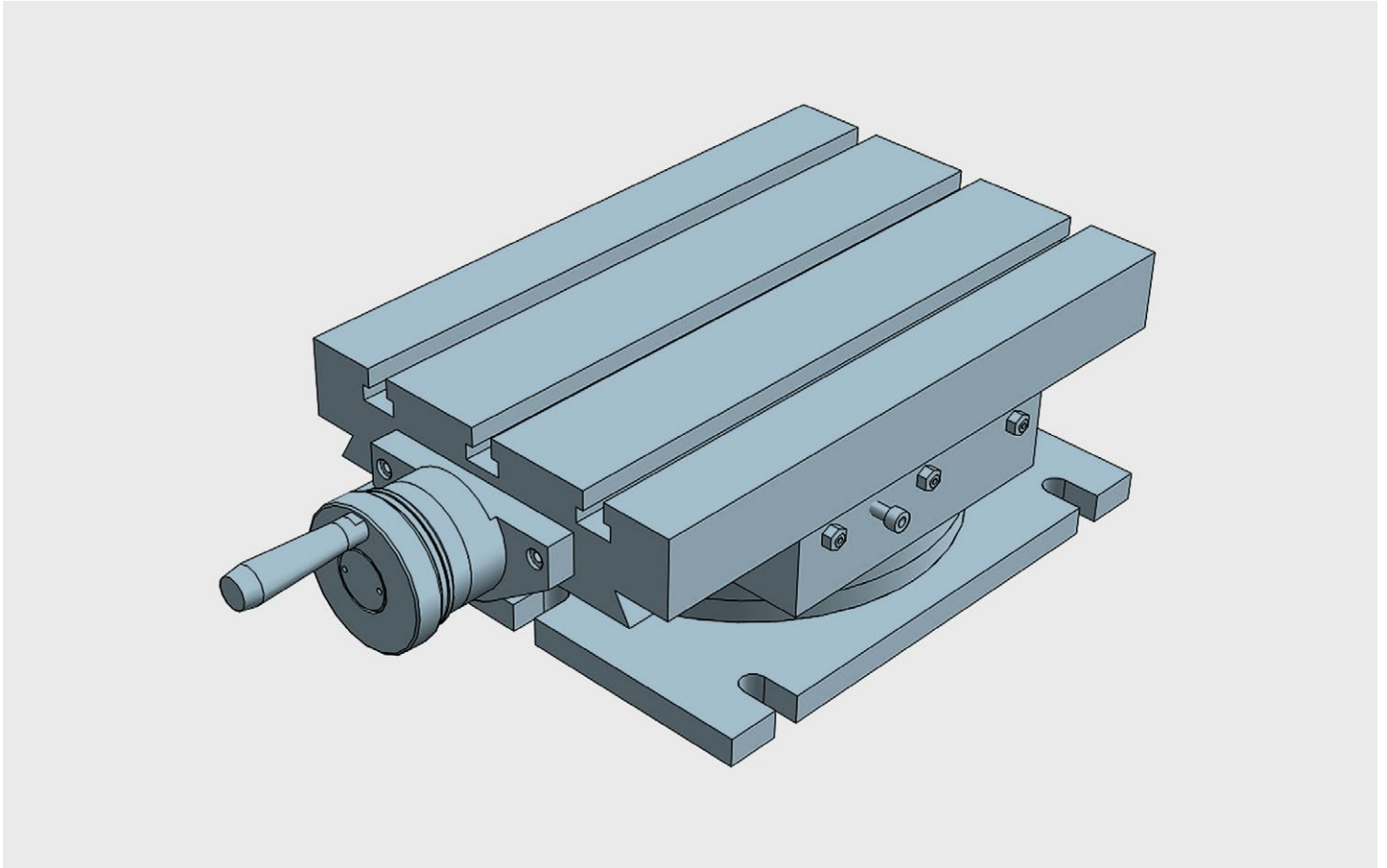
SINGLE axis table with rotary table (180°) for applications with linear units. Can be used in horizontal or vertical position. All elements in stabilized cast iron GG25. All surfaces with grinded finishment. Millimetered rules in XY. Vernier/nonuis matt chrome. Dial, with zero setting. Spindle with trapezoidal thread. Adjustable spindle nut. Standard lock in XY (M6 screw to block the dovetailed guides in working position)

Rotary slide table travelling 100

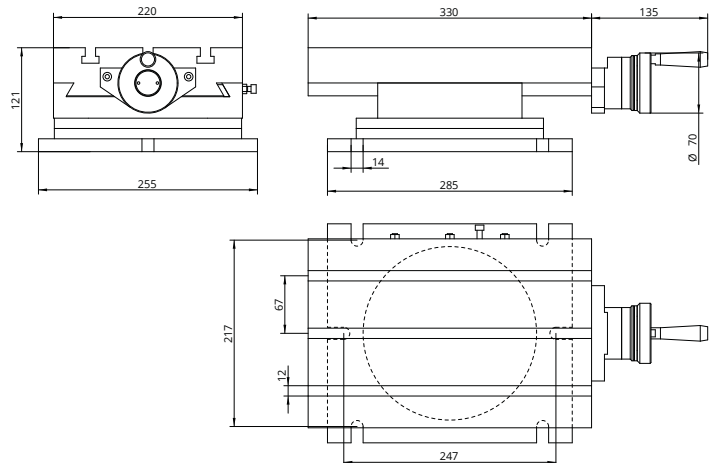
Technical Specifications

X - Travel [mm]	100
Y - Travel [mm]	-
Resolution [mm]	0,05
Max. weight [kg]	56
Max. work pres. [kg]	400
Weight [kg]	24





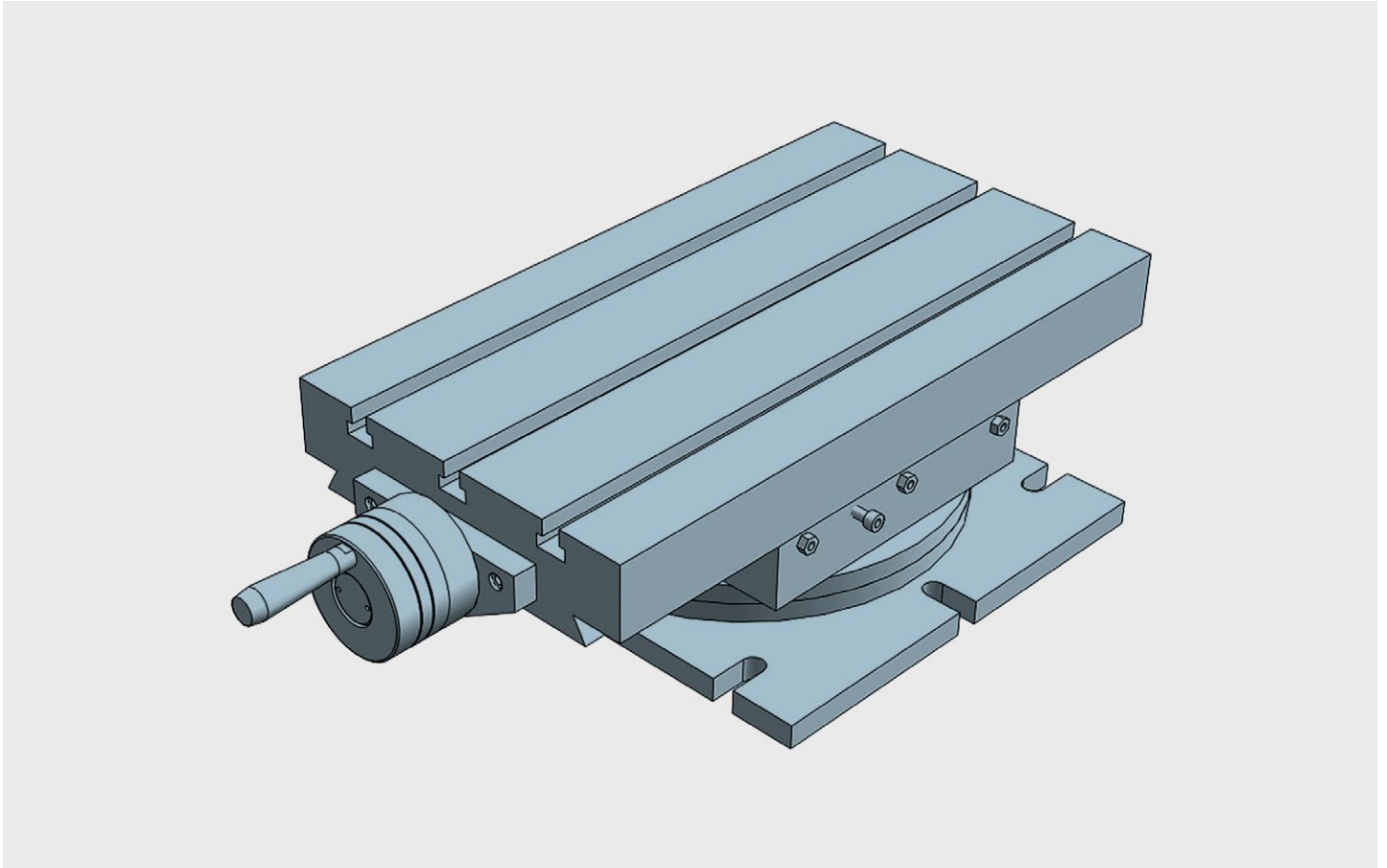
SINGLE axis table with rotary table (180°) for applications with linear units. Can be used in horizontal or vertical position. All elements in stabilized cast iron GG25. All surfaces with grinded finishment. Millimetered rules in XY. Vernier/nonuis matt chrome. Dial, with zero setting. Spindle with trapezoidal thread. Adjustable spindle nut. Standard lock in XY (M6 screw to block the dovetailed guides in working position)



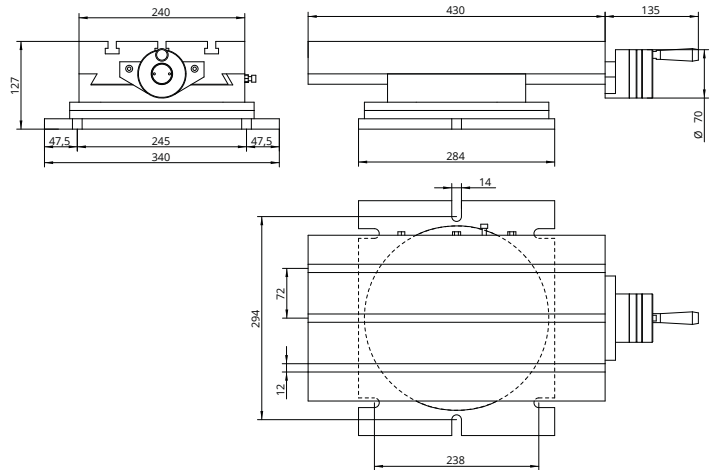
Rotary slide table travelling 162

Technical Specifications

X - Travel [mm]	162
Y - Travel [mm]	-
Resolution [mm]	0,05
Max. weight [kg]	100
Max. work pres. [kg]	500
Weight [kg]	41



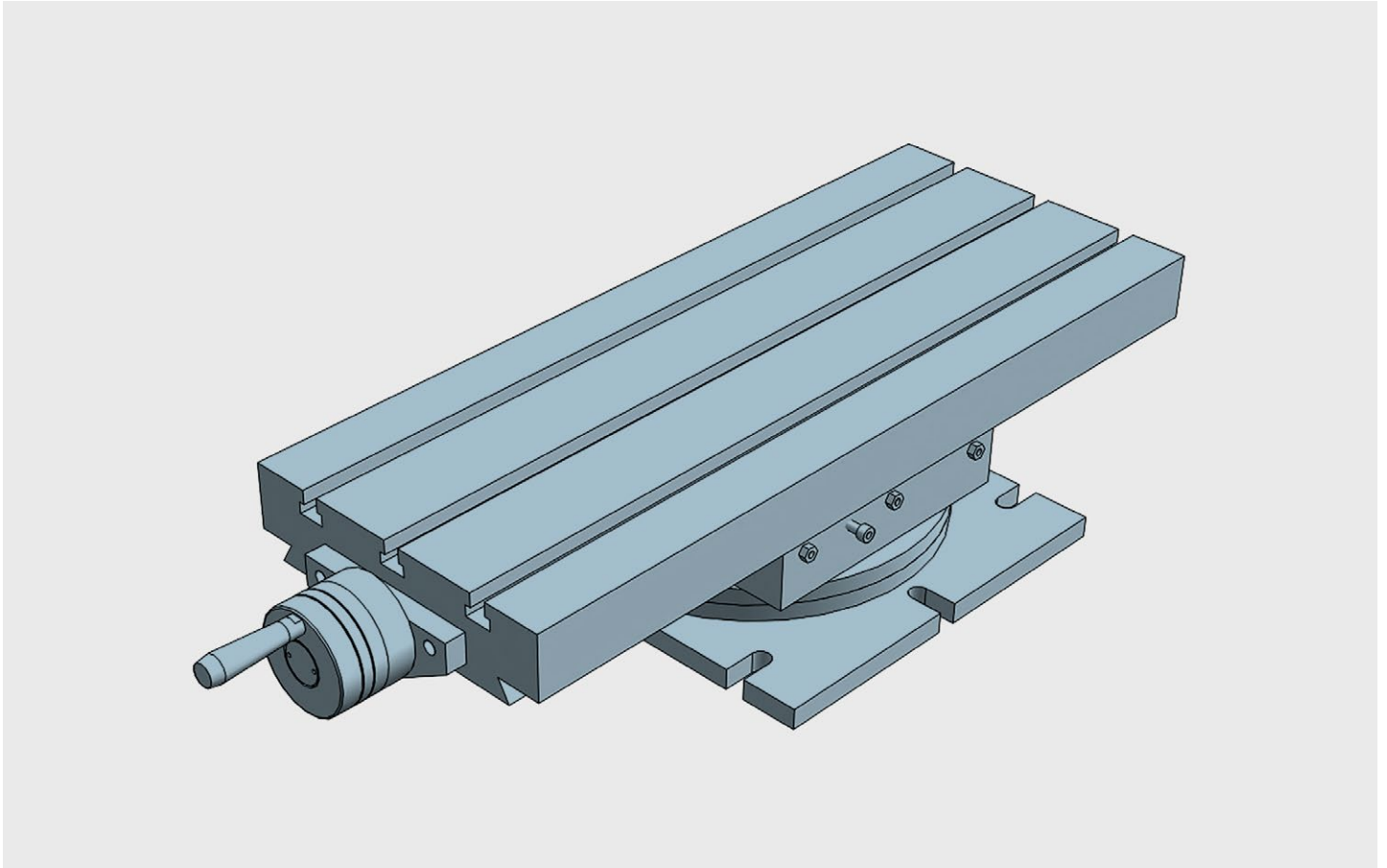
SINGLE axis table with rotary table (180°) for applications with linear units. Can be used in horizontal or vertical position. All elements in stabilized cast iron GG25. All surfaces with grinded finishment. Millimetered rules in XY. Vernier/nonuis matt chrome. Dial, with zero setting. Spindle with trapezoidal thread. Adjustable spindle nut. Standard lock in XY (M6 screw to block the dovetailed guides in working position)



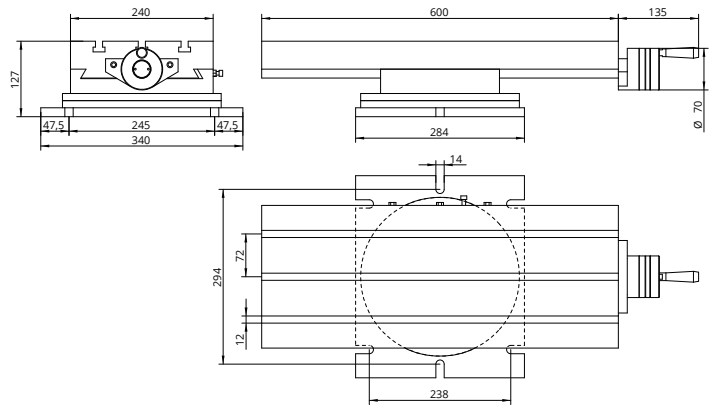
Rotary slide table travelling 250

Technical Specifications

X - Travel [mm]	250
Y - Travel [mm]	-
Resolution [mm]	0,05
Max. weight [kg]	180
Max. work pres. [kg]	700
Weight [kg]	49



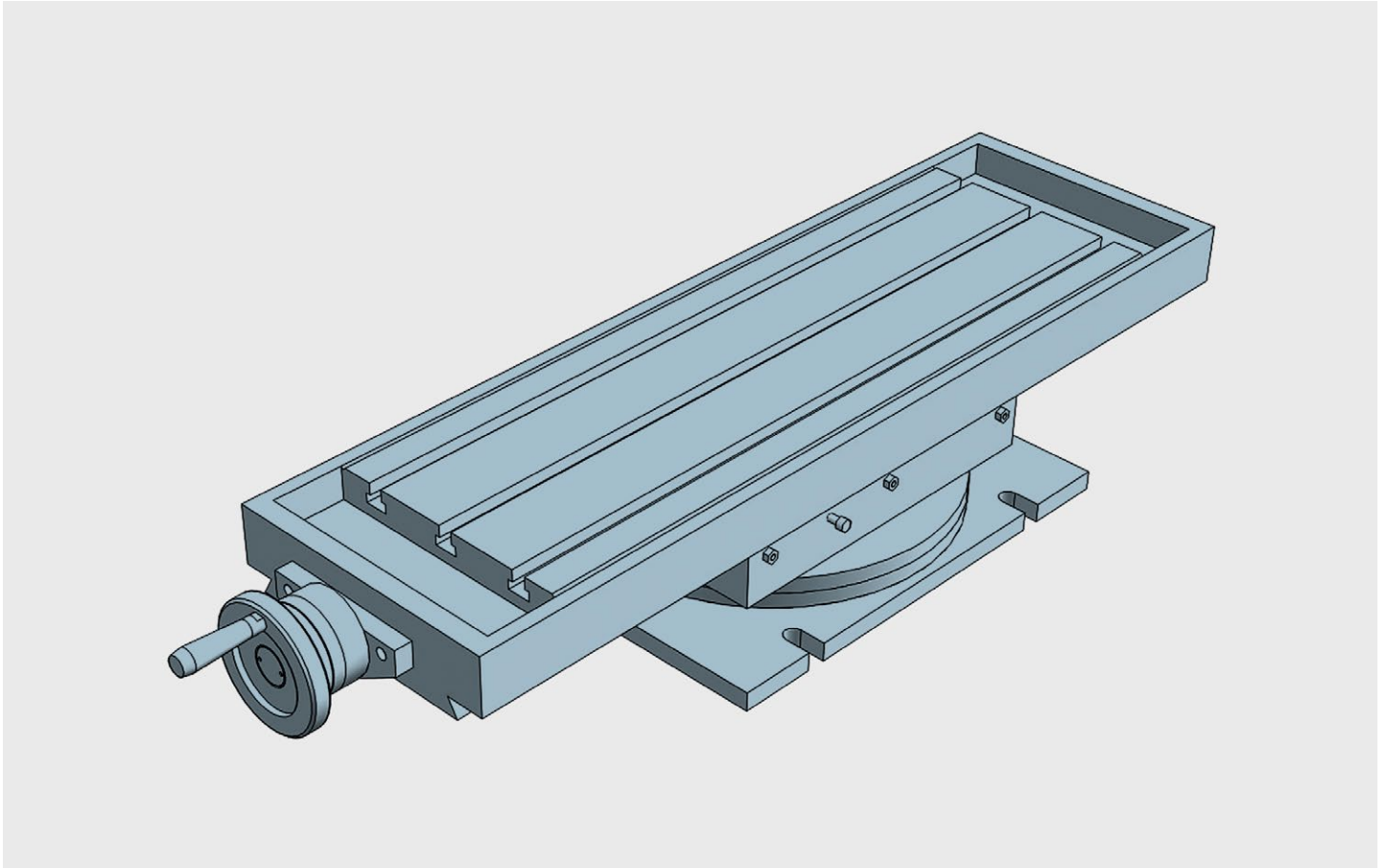
SINGLE axis table with rotary table (180°) for applications with linear units. Can be used in horizontal or vertical position. All elements in stabilized cast iron GG25. All surfaces with grinded finishment. Millimetered rules in XY. Vernier/nonuis matt chrome. Dial, with zero setting. Spindle with trapezoidal thread. Adjustable spindle nut. Standard lock in XY (M6 screw to block the dovetailed guides in working position)



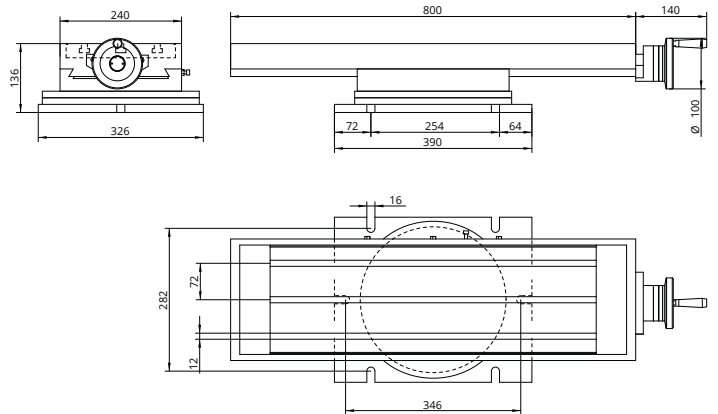
Rotary slide table travelling 400

Technical Specifications

X - Travel [mm]	400
Y - Travel [mm]	-
Resolution [mm]	0,05
Max. weight [kg]	180
Max. work pres. [kg]	700
Weight [kg]	63



SINGLE axis table with rotary table (180°) for applications with linear units. Can be used in horizontal or vertical position. All elements in stabilized cast iron GG25. All surfaces with grinded finishment. Millimetered rules in XY. Vernier/nonuis matt chrome. Dial, with zero setting. Spindle with trapezoidal thread. Adjustable spindle nut. Standard lock in XY (M6 screw to block the dovetailed guides in working position)



Rotary slide table travelling 500

Technical Specifications

X - Travel [mm]	500
Y - Travel [mm]	-
Resolution [mm]	0,05
Max. weight [kg]	220
Max. work pres. [kg]	900
Weight [kg]	132