

XY Coordinate tables

Fixed double axis cross tables, designed to be used on drilling and milling machines, special transfer assemblies and in any mechanical application in which X-Y movement has to be controlled.

Fixed basis XY two-axis multifunctional coordinate table for professional use on machines with coolant.

Designed for precision work, the MF DRILL series of coordinate tables is analogous to the MF series, but for works with the use of coolants, drills, etc. The DRILL equipment includes: grooves for refrigerant collection, large diameter handwheel, telescopic protections on the longitudinal axis for the nut and spindle mechanism and, adjustable stop for X travel.

The MF DRILL coordinate table is optimal for drilling applications, vertical drilling, horizontal drilling, milling, welding, transfer systems, tool holders and in any other mechanical application where precise control of the XY position is necessary.

The robust and robust design of the linear table allows a large number of jobs to be carried out while maintaining positioning precision and repeatability in any type of linear positioning. An industry standard and rugged coordinate table that ensures a long service life.

All the elements of the MF DRILL series of manual coordinate tables are made of cast iron alloy (high-quality GG25 stabilized gray cast iron), giving it extraordinary mechanical rigidity.

Technical details:

- Displacement by dovetails with clearance adjustment (all surfaces grinding finishment)
- Millimeter rulers and matte chrome vernier, with dial and zero adjustment.
- Trapezoidal threaded spindle with adjustable spindle nut.
- Locking brake to fix the XY table in its working position

The MF DRILL Series fixed crosstable offers 5 models of different sizes, from 240x160 to 700x400 mm of useful travelling, in order to adapt to the needs of the application and offer flexibility and adaptation to different uses and applications: all types of machine tools, drills, grinding, sharpening, milling machines, lathes, optical and laser systems, positioning of work heads, adjustment and position regulation of parts in presses, displacement for cutting welding, industrial engraving.

BAZUS commitment:

- The highest quality, robust and durable coordinate tables on the market.
- Tables with the finest linear positioning and without spindle-play.
- Coordinate tables made 100% in Europe.

Customized solutions:

BAZUS, your trusted partner for high-performance positioning systems, provides the right solution for any application, specifically designed or customized to the characteristics and requirements of your activity.

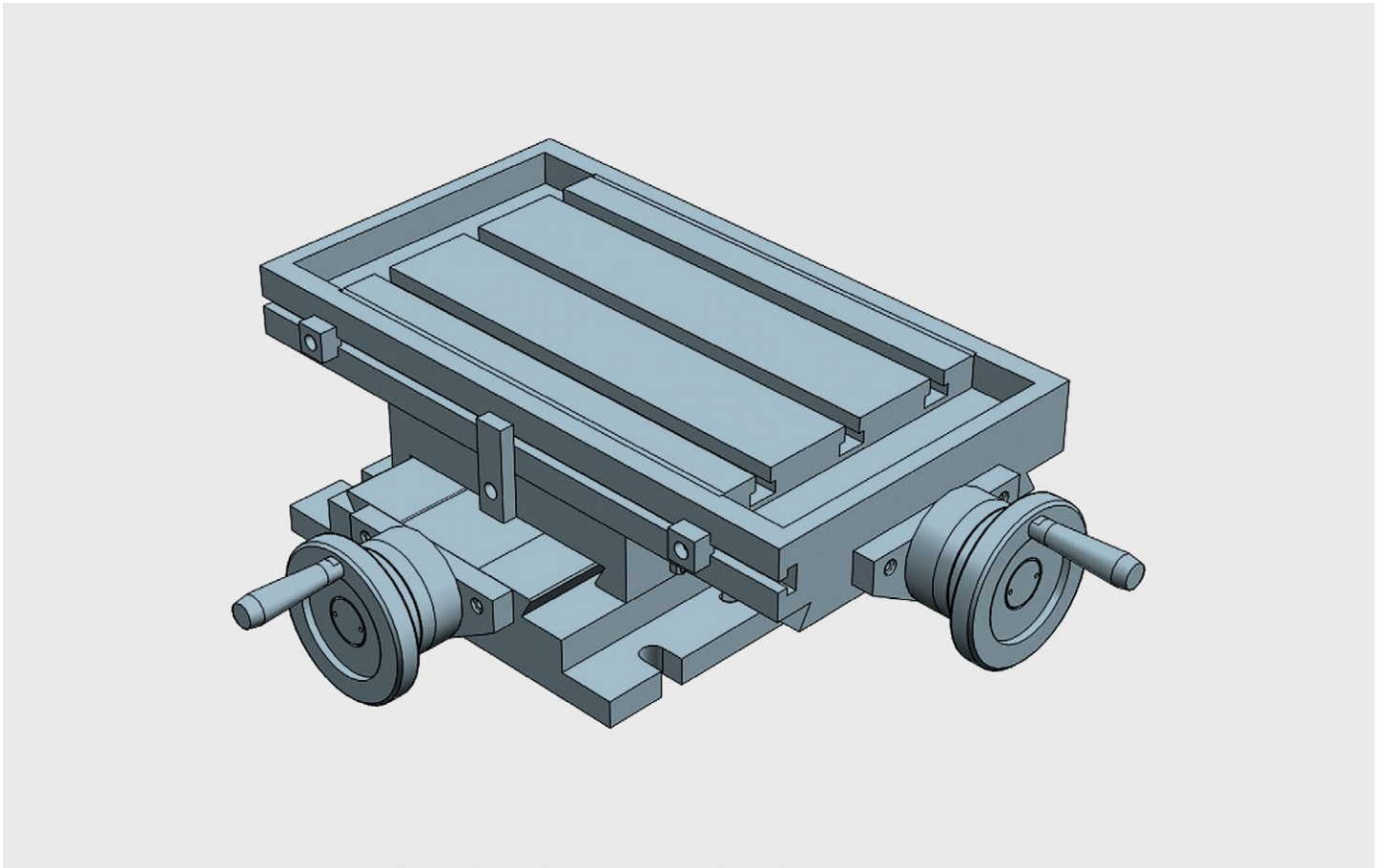
Whatever your coordinate table, thanks to more than 100 years of continuous improvement, you will have a partner who offers solutions to all your positioning and movement requirements with many different applications available worldwide.

The first guarantee, for 5 years:

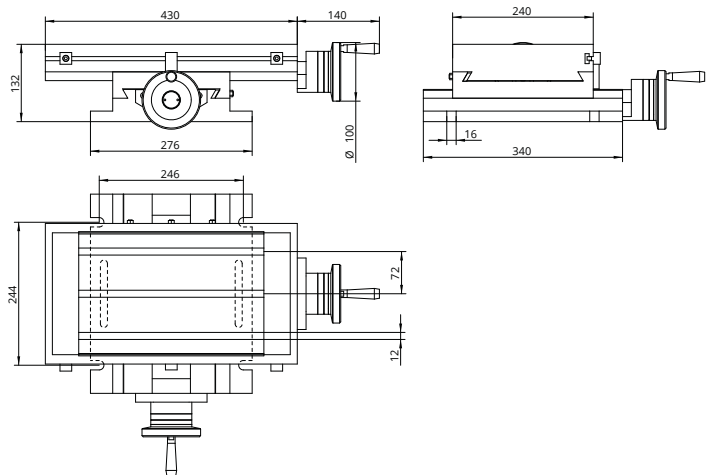
Why settle for a 2 year warranty? At BAZUS we believe that, if the coordinate tables do not expire at this time, neither should the professional attention received. So once again we want to change the rules. 5 year guarantee.

MF-2-Drill

MF DRILL Standard XY coordinate table for Drilling



Fixed double axis crosstable, designed to be used on drilling, milling, pad printing machines, special transfer assemblies and in any mechanical application in which XY movement has to be controlled and adjusted. DRILLING equipment: slots for cooling collecting, handwheel with large diameter, longitudinal enstops and telescopic protection guides for transversal spindle. All elements in stabilized cast iron GG25. All surfaces with grinded finishment. Millimetered rules in XY. Vernier/nonuis matt chrome. Dial, with zero setting. Spindle with trapezoidal thread. Adjustable spindle nut. Standard lock in XY (M6 screw to block the dovetailed guides in working position). Coolant drainage box. Telescopic steel protectors. X-end travelling stops



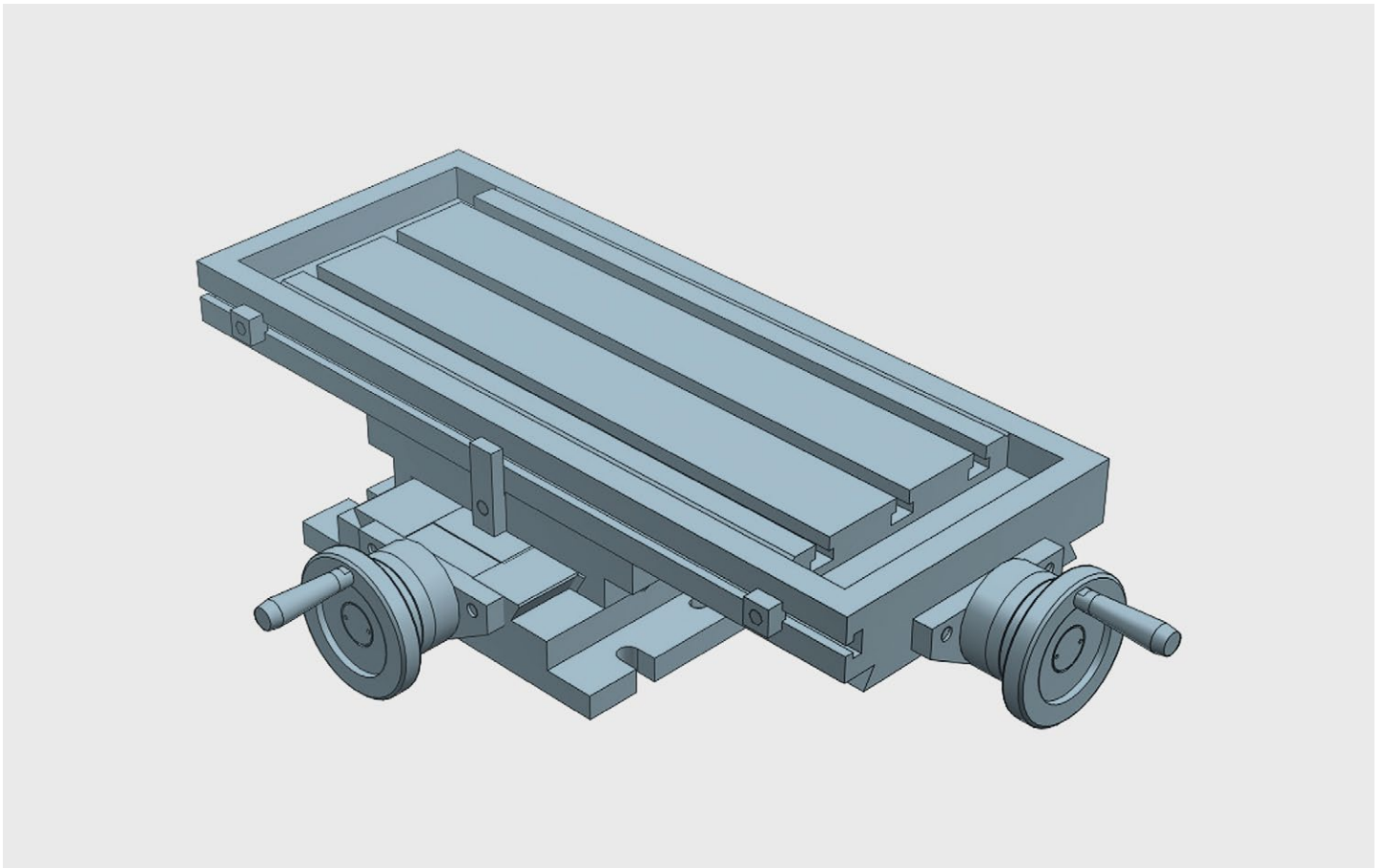
Fixed crosstable "DRILL" travelling 240x160

Technical Specifications

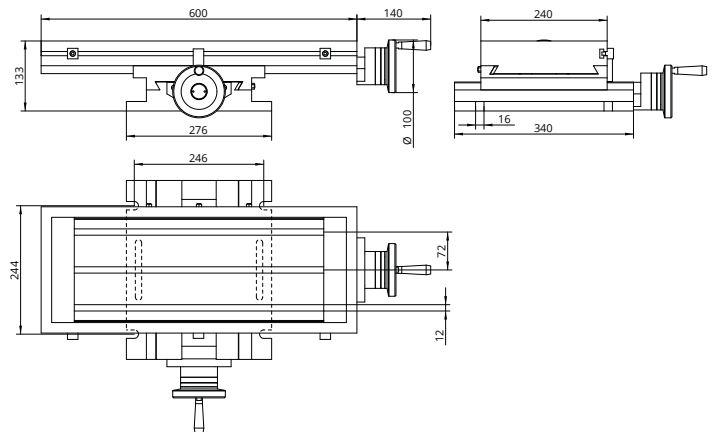
X - Travel [mm]	240
Y - Travel [mm]	160
Resolution [mm]	0,05
Max. weight [kg]	270
Max. work pres. [kg]	900
Weight [kg]	46

MF-3-Drill

MF DRILL Standard XY coordinate table for Drilling



Fixed double axis crosstable, designed to be used on drilling, milling, pad printing machines, special transfer assemblies and in any mechanical application in which XY movement has to be controlled and adjusted. DRILLING equipment: slots for cooling collecting, handwheel with large diameter, longitudinal enstops and telescopic protection guides for transversal spindle. All elements in stabilized cast iron GG25. All surfaces with grinded finishment. Millimetered rules in XY. Vernier/nonuis matt chrome. Dial, with zero setting. Spindle with trapezoidal thread. Adjustable spindle nut. Standard lock in XY (M6 screw to block the dovetailed guides in working position). Coolant drainage box. Telescopic steel protectors. X-end travelling stops



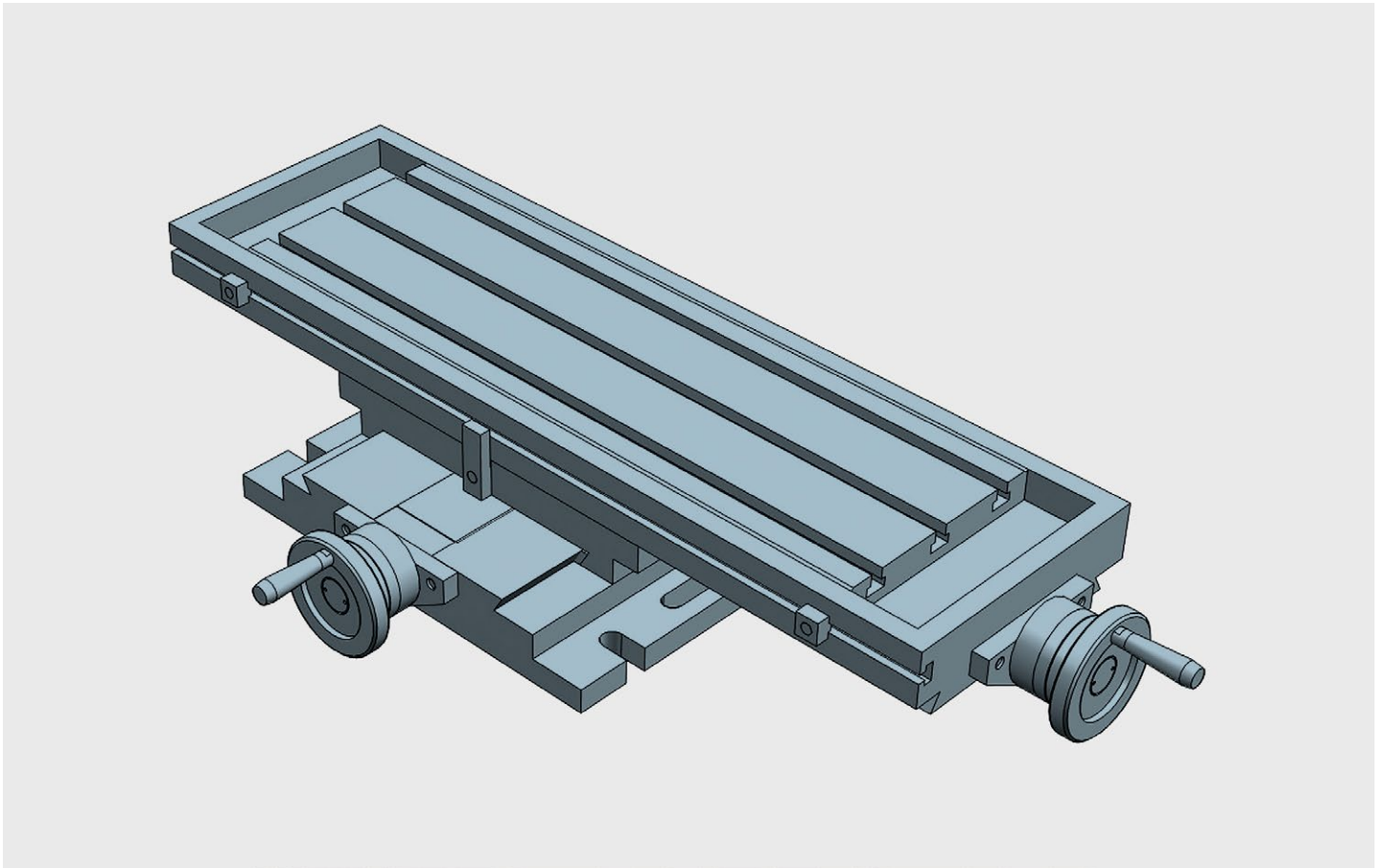
Fixed crosstable "DRILL" travelling 350x160

Technical Specifications

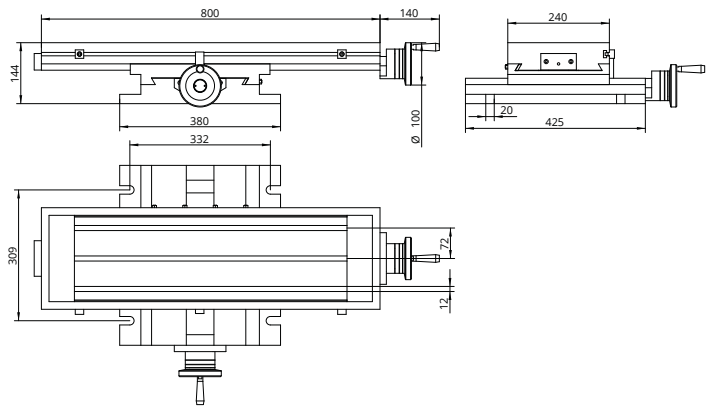
X - Travel [mm]	350
Y - Travel [mm]	160
Resolution [mm]	0,05
Max. weight [kg]	270
Max. work pres. [kg]	980
Weight [kg]	56

MF-4-Drill

MF DRILL Standard XY coordinate table for Drilling



Fixed double axis crosstable, designed to be used on drilling, milling, pad printing machines, special transfer assemblies and in any mechanical application in which XY movement has to be controlled and adjusted. DRILLING equipment: slots for cooling collecting, handwheel with large diameter, longitudinal enstops and telescopic protection guides for transversal spindle. All elements in stabilized cast iron GG25. All surfaces with grinded finishment. Millimetered rules in XY. Vernier/nonuis matt chrome. Dial, with zero setting. Spindle with trapezoidal thread. Adjustable spindle nut. Standard lock in XY (M6 screw to block the dovetailed guides in working position). Coolant drainage box. Telescopic steel protectors. X-end travelling stops



Fixed crosstable "DRILL" travelling 470x240

Technical Specifications

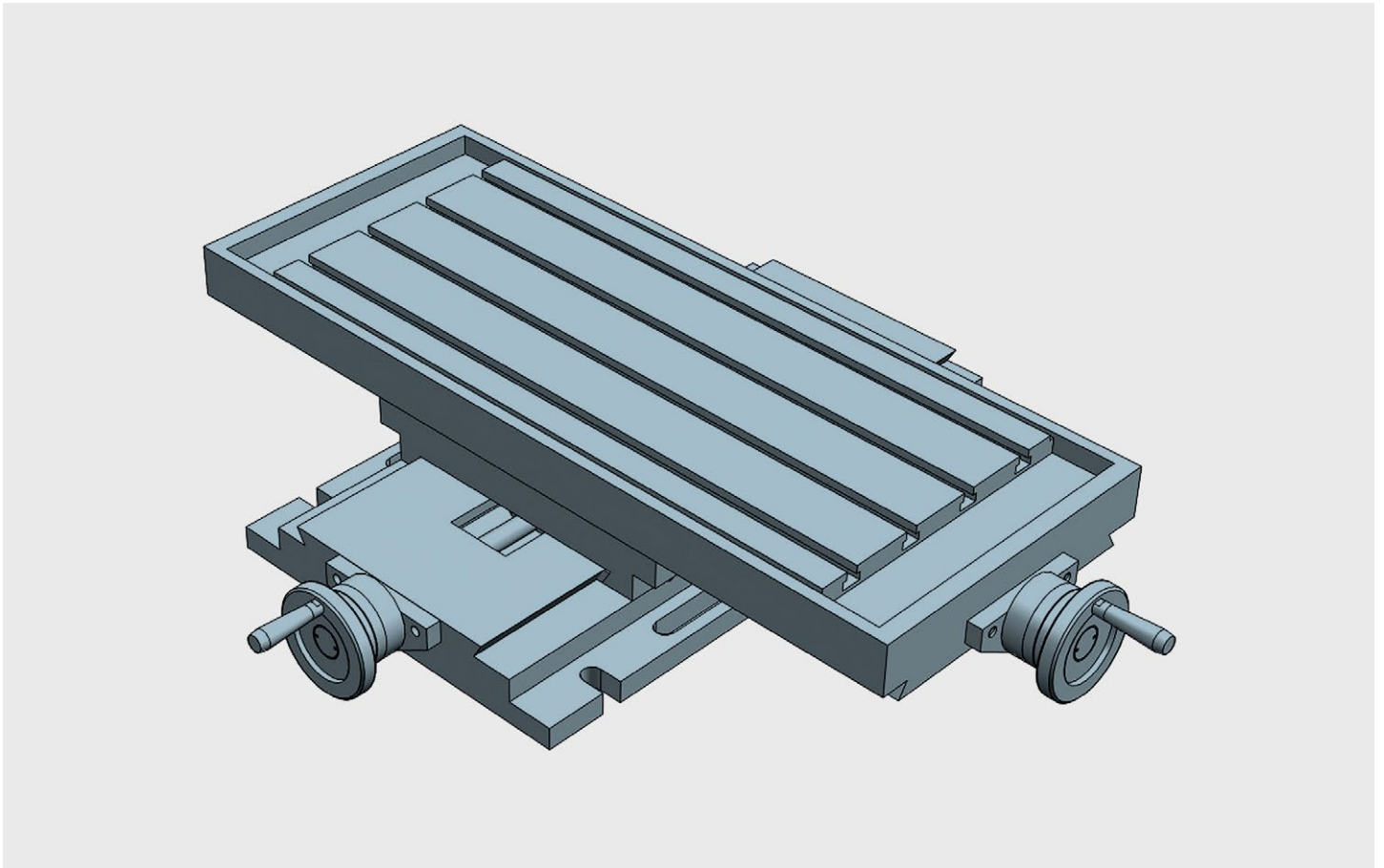
X - Travel [mm]	470
Y - Travel [mm]	240
Resolution [mm]	0,05
Max. weight [kg]	290
Max. work pres. [kg]	1200
Weight [kg]	86

Valdeolivos, S/N
E22422 Fonz (Huesca) - Spain
Phone: (+34) 974 412 063
E-mail: info@bazus.com
www.bazus.com

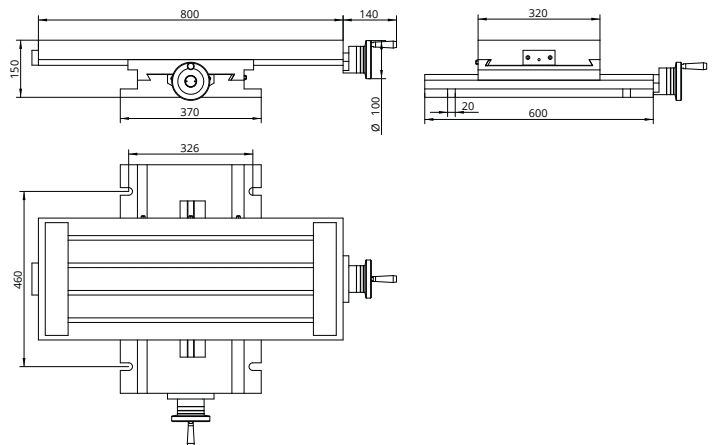
BAZUS

MF-5-Drill

MF DRILL Standard XY coordinate table for Drilling



Fixed double axis crosstable, designed to be used on drilling, milling, pad printing machines, special transfer assemblies and in any mechanical application in which XY movement has to be controlled and adjusted. DRILLING equipment: slots for cooling collecting and handwheel with large diameter. All elements in stabilized cast iron GG25. All surfaces with grinded finishment. Millimetered rules in XY. Vernier/nonuis matt chrome. Dial, with zero setting. Spindle with trapezoidal thread. Adjustable spindle nut. Standard lock in XY (M6 screw to block the dovetailed guides in working position). Coolant drainage box



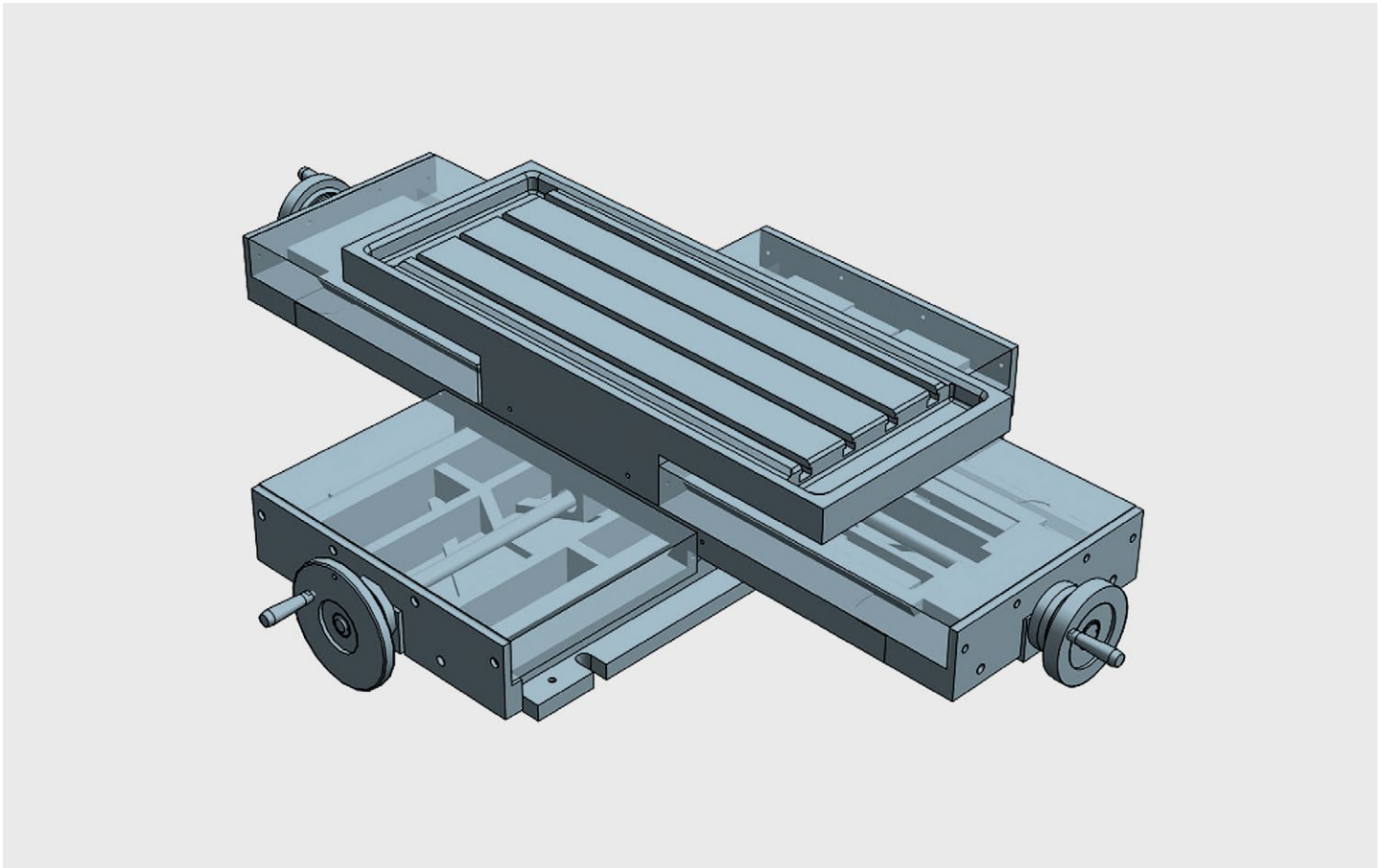
Fixed crosstable "DRILL" travelling 470x300

Technical Specifications

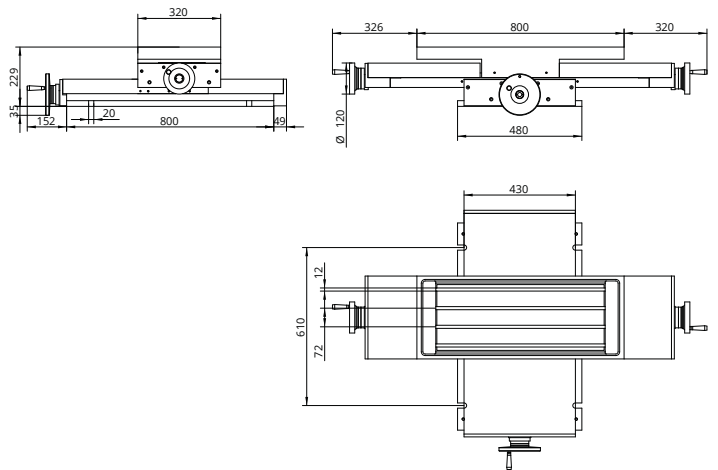
X - Travel [mm]	470
Y - Travel [mm]	300
Resolution [mm]	0,05
Max. weight [kg]	320
Max. work pres. [kg]	1200
Weight [kg]	122

MF-6-Drill

MF DRILL Standard XY coordinate table for Drilling



Fixed double axis crosstable, designed to be used on drilling, milling, pad printing machines, special transfer assemblies and in any mechanical application in which XY movement has to be controlled and adjusted. DRILLING equipment: slots for cooling collecting, handwheel with large diameter and protection covers in XY All elements in stabilized cast iron GG25. All surfaces with grinded finishment. Millimetered rules in XY. Vernier/nonuis matt chrome. Dial, with zero setting. Spindle with trapezoidal thread. Adjustable spindle nut. Standard lock in XY (M6 screw to block the dovetailed guides in working position). Coolant drainage box. Protection belows in XY



Fixed crosstable "DRILL" travelling 700x400

Technical Specifications

X - Travel [mm]	700
Y - Travel [mm]	400
Resolution [mm]	0,05
Max. weight [kg]	900
Max. work pres. [kg]	1350
Weight [kg]	290