

CNC Coordinate tables

The BAZUS automatic series has been developed for automated industrial process applications. The system is designed mechanically and electrically according to the degree of automation required and the precision and repeatability needed.

XY automatic two axis high speed coordinate table for professional use

Designed for automatic work with high speed, the MB series are optimal coordinate tables for all types of automatic movement in an industrial environment: drilling, milling, grinding, welding, transfer systems, industrial engraving, automatic positioning of laser and optical systems, movement of autonomous tool holders and / or heads, as well as in any other mechanical application where automatic control of the XY position is necessary.

Its solid and robust design allows a large number of jobs to be carried out while maintaining complete adjustment and positioning accuracy and high repeatability in any type of linear positioning. A coordinate table that excels in the industry for its excellence.

All the elements of the MB series automatic coordinate tables are made of cast iron (high quality GG25 stabilized gray cast iron), which gives it extraordinary mechanical rigidity.

Technical details:

- High precision, versatility and long life of components and accessories.
- It stands out for its versatility in many different uses or situations.
- Linear movement, with low resistance to friction.
- Movement by means of recirculating ball guides to obtain high acceleration and high speed.
- Servobrushless motors with encoder.
- Ball recirculation spindles with double preloaded nut.
- Synchronization with external devices (head, cooling pump, etc...)
- Software and interface included.

The MB series automatic table offers 3 models of different sizes, from 250x175 mm at 450x340 mm of useful travelling, in order to be able to adapt to the various requirements and / or different uses and applications: all kinds of machine tools, drills, grinding machines, sharpening machines, milling machines, lathes, linear optical and laser systems, positioning of work heads, adjustment and position regulation of parts in presses, displacement for welding cutting and industrial engraving.

BAZUS commitment:

- The highest quality, robust and durable coordinate tables on the market.
- Tables with the finest linear positioning and without spindle-play.
- Coordinate tables made 100% in Europe.

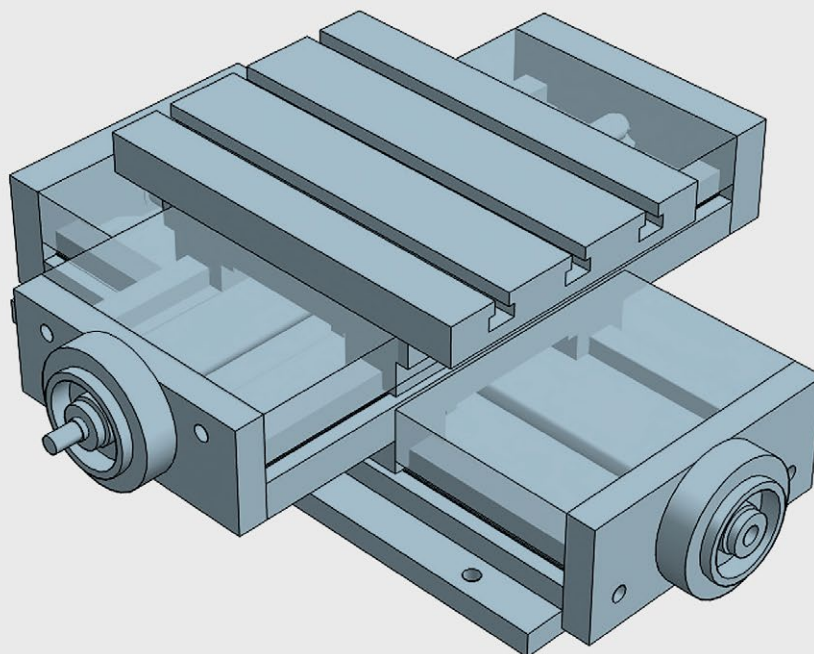
Customized solutions:

BAZUS, your trusted partner for high-performance positioning systems, provides the right solution for any application, specifically designed or customized to the characteristics and requirements of your activity.

Whatever your coordinate table, thanks to more than 100 years of continuous improvement, you will have a partner who offers solutions to all your positioning and movement requirements with many different applications available worldwide.

The first guarantee, for 5 years:

Why settle for a 2 year warranty? At BAZUS we believe that, if the coordinate tables do not expire at this time, neither should the professional attention received. So once again we want to change the rules. 5 year guarantee.

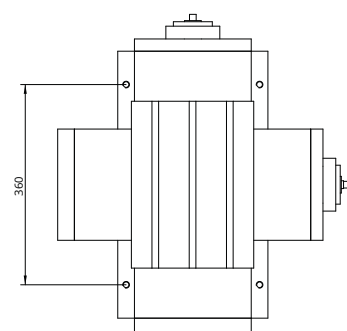
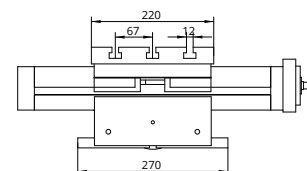
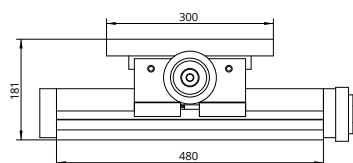


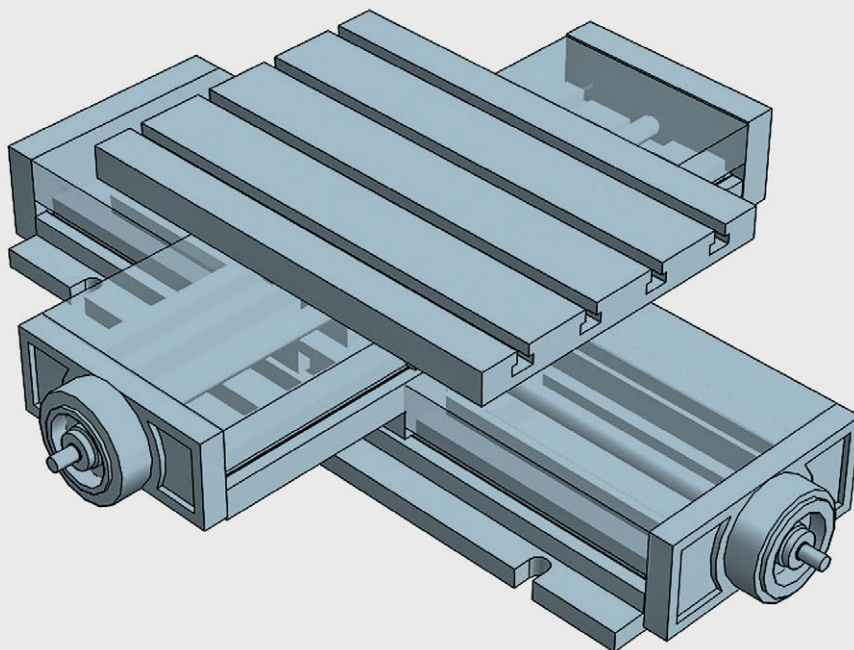
XY slide unit prepared for high movement speeds and light loads. Equipped with high-accuracy linear guides and interchangeable working platform

Automatic "Light" crosstable travelling 250x175

Technical Specifications

X - Travel [mm]	250
Y - Travel [mm]	175
Tolerance CNC [mm]	+/- 0,01
Max. weight [kg]	300
Max. work pres. [kg]	1000
Weight [kg]	90



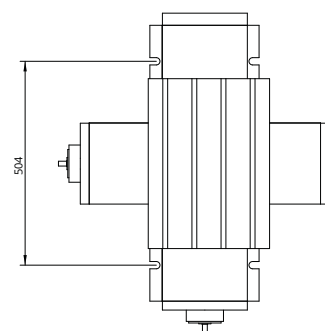
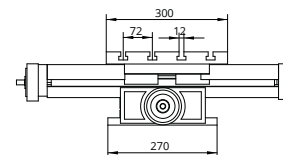
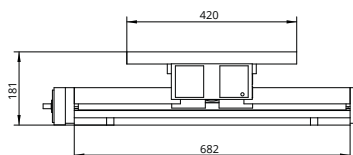


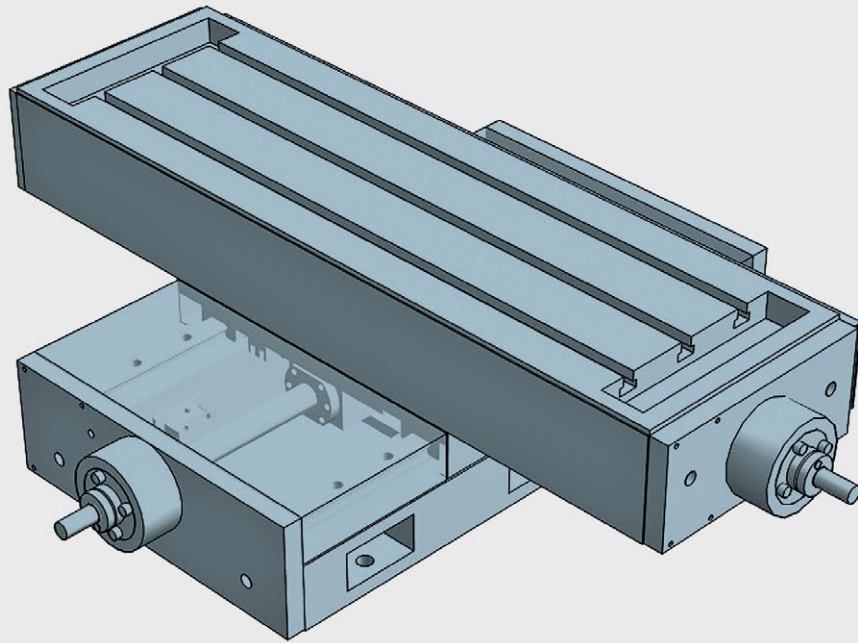
XY slide unit prepared for high movement speeds and light loads. Equipped with high-accuracy linear guides and interchangeable working platform

Automatic "Light" crosstable travelling 442x250

Technical Specifications

X - Travel [mm]	442
Y - Travel [mm]	250
Tolerance CNC [mm]	+/- 0,01
Max. weight [kg]	300
Max. work pres. [kg]	1000
Weight [kg]	103





XY slide unit prepared for high movement speeds and light loads. Equipped with high-accuracy linear guides and interchangeable working platform

Automatic "Light" crosstable travelling 450x340

Technical Specifications

X - Travel [mm]	450
Y - Travel [mm]	340
Tolerance CNC [mm]	+/- 0,01
Max. weight [kg]	550
Max. work pres. [kg]	1500
Weight [kg]	180

