

CNC Coordinate tables

The BAZUS automatic series has been developed for automated industrial process applications. The system is designed mechanically and electrically according to the degree of automation required and the precision and repeatability needed.

XY automatic two-axis multifunctional coordinate table for professional use.

Designed for high precision automatic work, the KN series are optimal coordinate tables for all types of automatic movement in an industrial environment: drilling, milling, grinding, welding, transfer systems, industrial engraving, automatic positioning of laser and optical systems, movement of autonomous tool holders and / or heads, as well as in any other mechanical application where automatic control of the XY position is necessary.

Its solid and robust design allows a large number of jobs to be carried out while maintaining complete adjustment and positioning accuracy and high repeatability in any type of linear positioning. A coordinate table that excels in the industry for its excellence.

All the elements of the KN series automatic coordinate tables are made of cast iron (high-quality stabilized gray GG25 cast iron), which gives it extraordinary mechanical rigidity.

Technical details:

- High precision, versatility and long life of components and accessories.
- It stands out for its versatility in many different uses or situations.
- Linear movement, with low resistance to friction.
- Movement by means of dovetail guides with turcite to obtain a very low coefficient of friction (all surfaces grinding finishment) and great mechanical rigidity against vibration.
- Servobrushless motors with encoder.
- Ball recirculation spindles with double preloaded nut.
- Synchronization with external devices (head, cooling pump, etc...)
- Software and interface included.

The KN series of automatic tables offer 6 models of different sizes, from 190x130 mm to 700x400 mm of useful travelling, in order to be able to adapt to the various requirements and / or different uses and applications: all kinds of machine tools, drills, grinding machines, sharpening machines, milling machines, lathes, linear optical and laser systems, positioning of work heads , adjustment and position regulation of parts in presses, displacement for welding cutting and industrial engraving.

BAZUS commitment:

- The highest quality, robust and durable coordinate tables on the market.
- Tables with the finest linear positioning and without spindle-play.
- Coordinate tables made 100% in Europe.

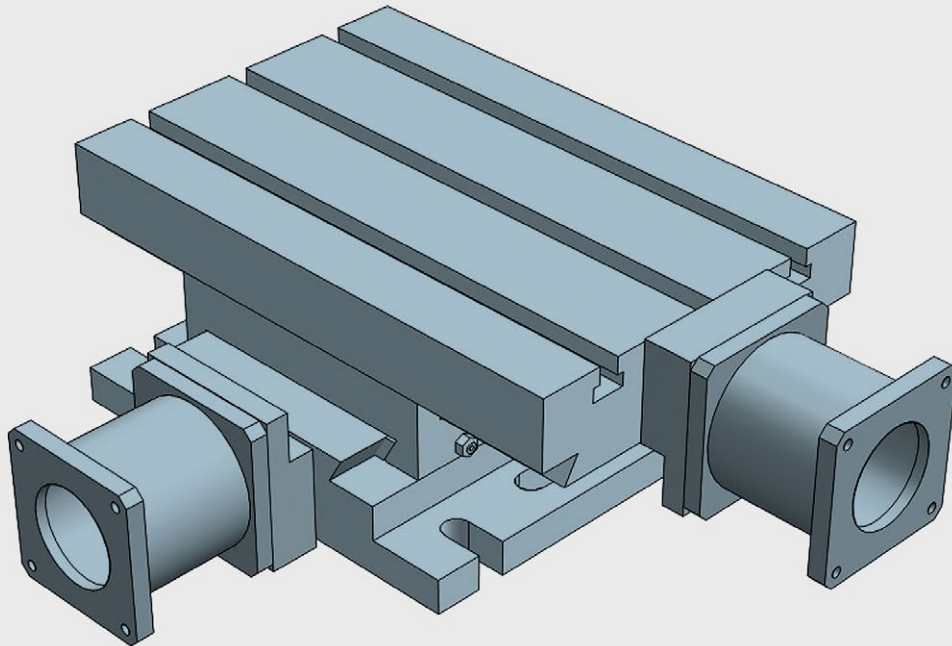
Customized solutions:

BAZUS, your trusted partner for high-performance positioning systems, provides the right solution for any application, specifically designed or customized to the characteristics and requirements of your activity.

Whatever your coordinate table, thanks to more than 100 years of continuous improvement, you will have a partner who offers solutions to all your positioning and movement requirements with many different applications available worldwide.

The first guarantee, for 5 years:

Why settle for a 2 year warranty? At BAZUS we believe that, if the coordinate tables do not expire at this time, neither should the professional attention received. So once again we want to change the rules. 5 year guarantee.

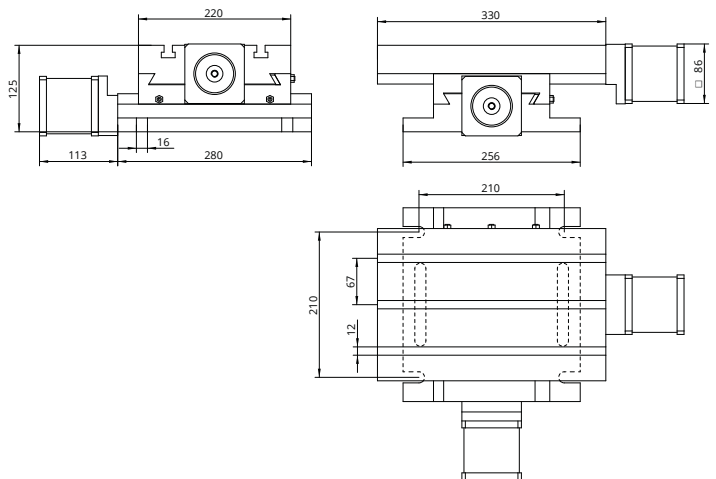


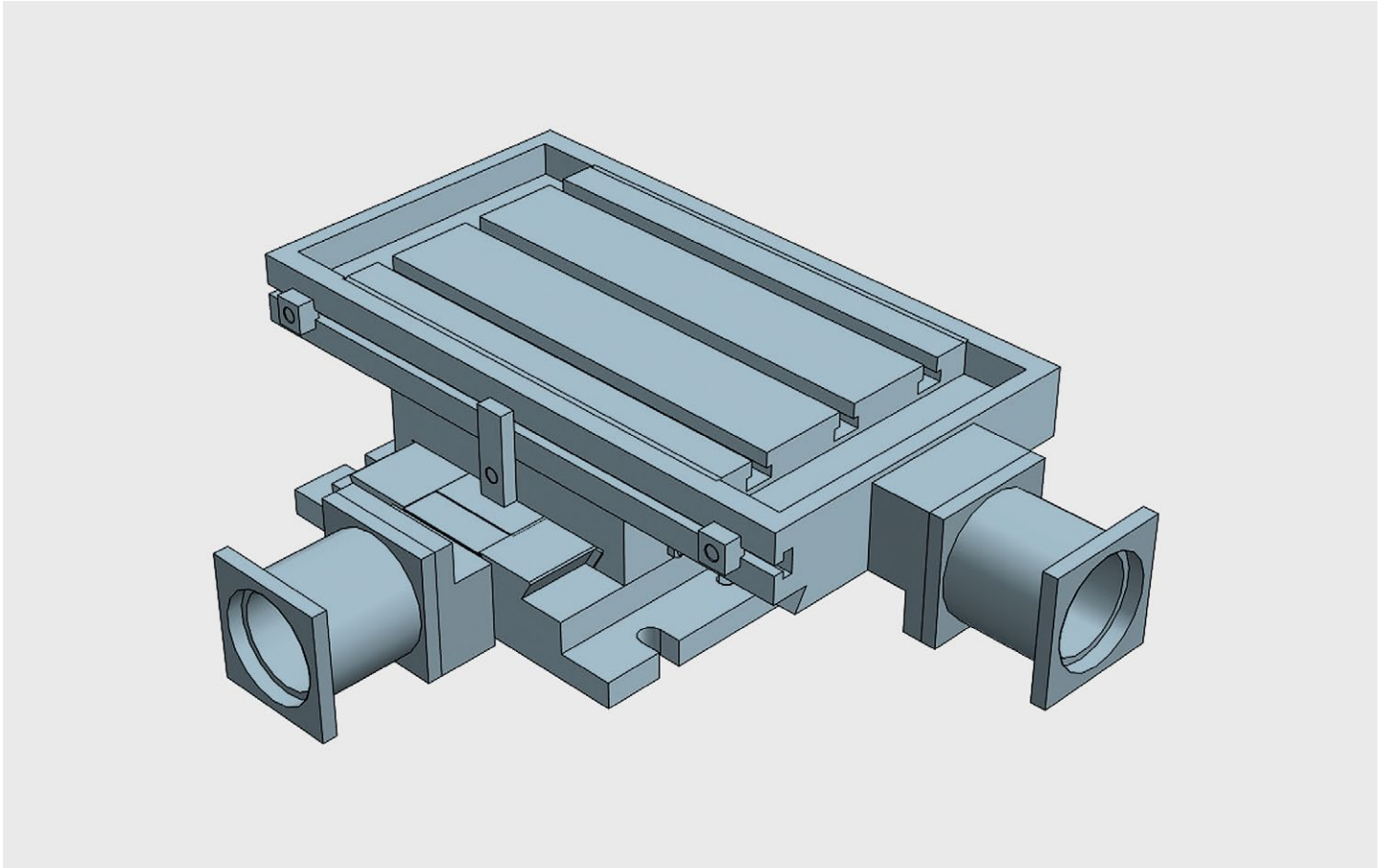
Double axis automatic unit. All elements in stabilized cast iron GG25. All surfaces with grinded finishment. Ballbearing spindles with double nut. Dovetailed guides with turcite. Any CNC available under request

Automatic XY crosstable travelling 190x130

Technical Specifications

X - Travel [mm]	190
Y - Travel [mm]	130
Tolerance CNC [mm]	+/- 0,01
Max. weight [kg]	105
Max. work pres. [kg]	700
Weight [kg]	39



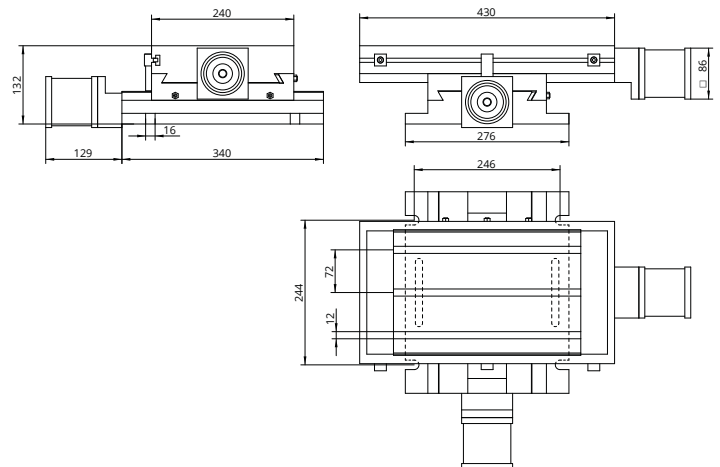


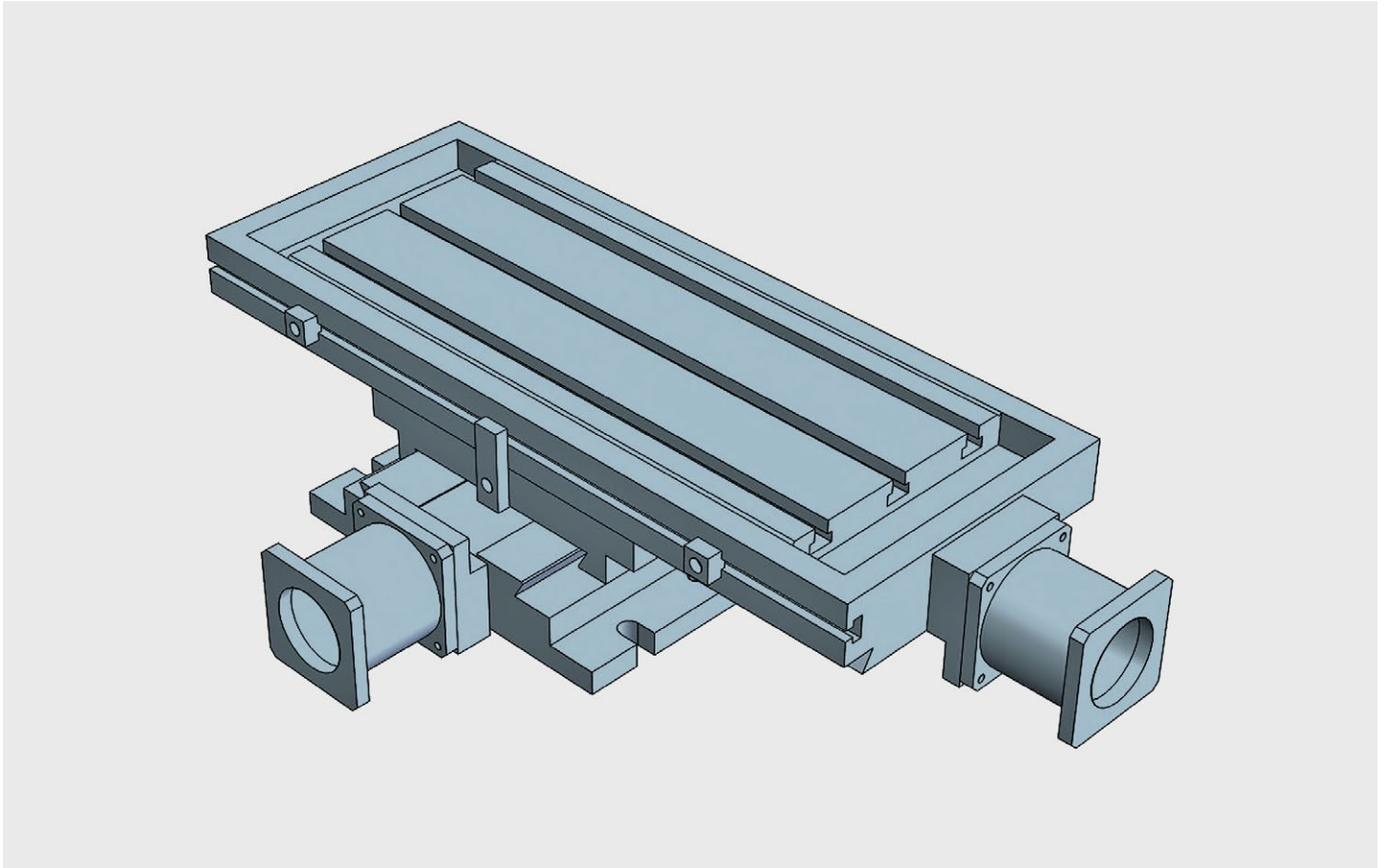
Fixed double axis automatic XY unit. All elements in stabilized cast iron GG25. All surfaces with grinded finishment. Ballbearing spindles with double nut. Dovetailed guides with turcite. Any CNC available under request

Automatic XY crosstable travelling 240x160

Technical Specifications

X - Travel [mm]	240
Y - Travel [mm]	160
Tolerance CNC [mm]	+/- 0,01
Max. weight [kg]	270
Max. work pres. [kg]	900
Weight [kg]	46



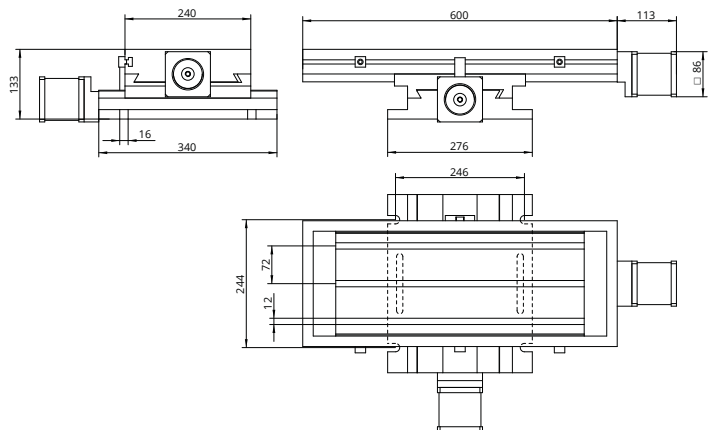


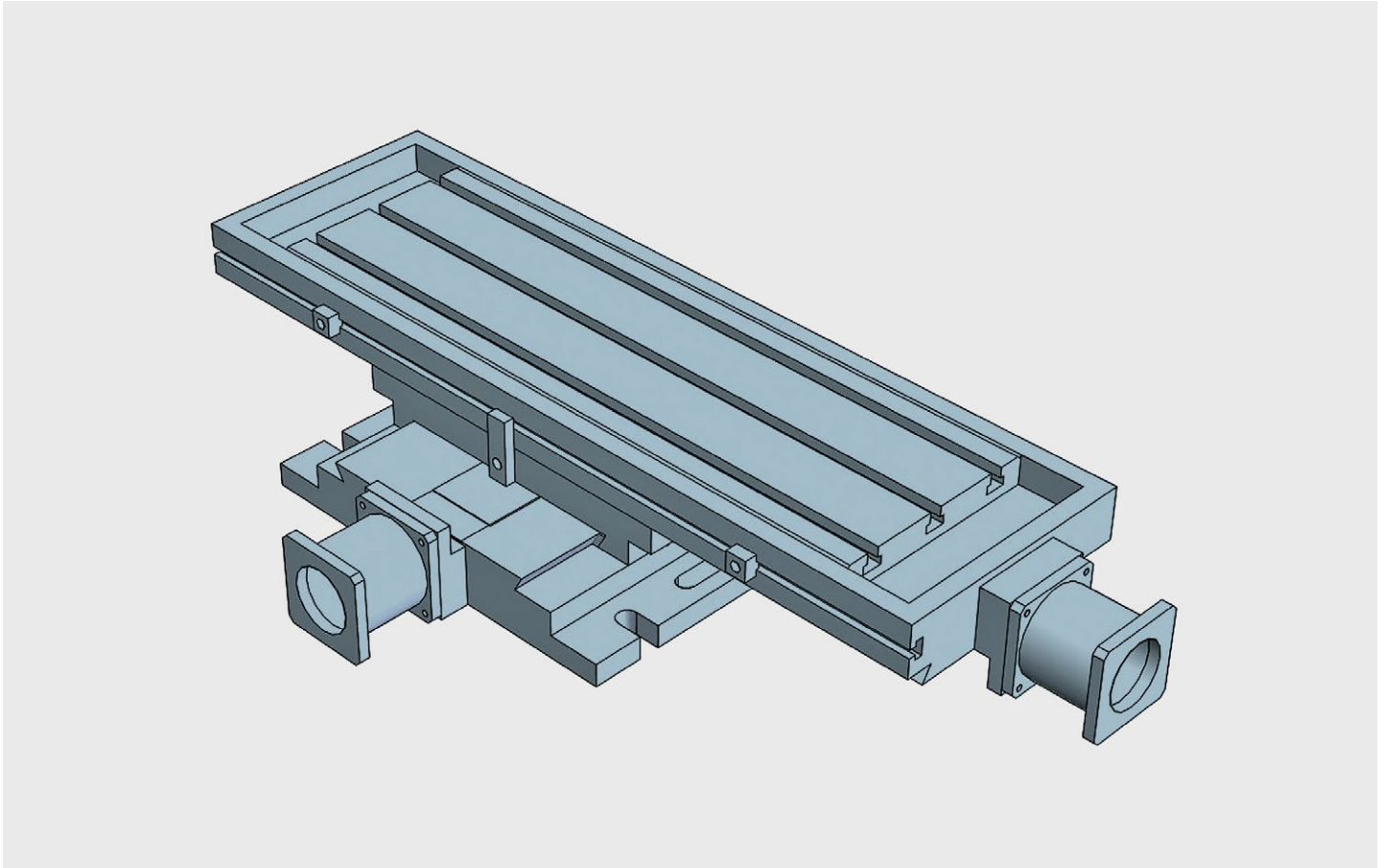
Fixed double axis automatic XY unit. All elements in stabilized cast iron GG25. All surfaces with grinded finishment. Ballbearing spindles with double nut. Dovetailed guides with turcite. Any CNC available under request

Automatic XY crosstable travelling 350x160

Technical Specifications

X - Travel [mm]	350
Y - Travel [mm]	160
Tolerance CNC [mm]	+/- 0,01
Max. weight [kg]	270
Max. work pres. [kg]	980
Weight [kg]	56



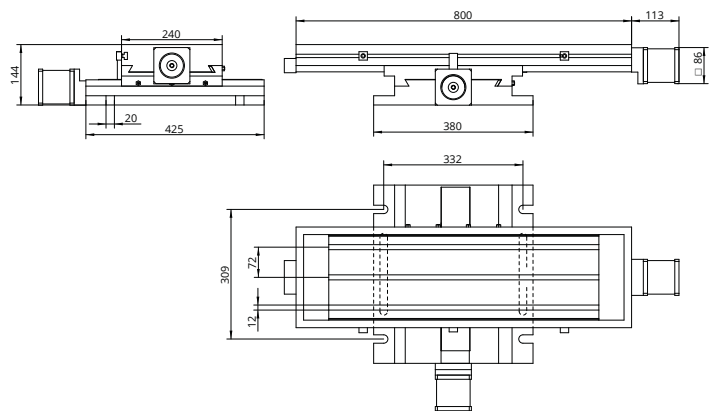


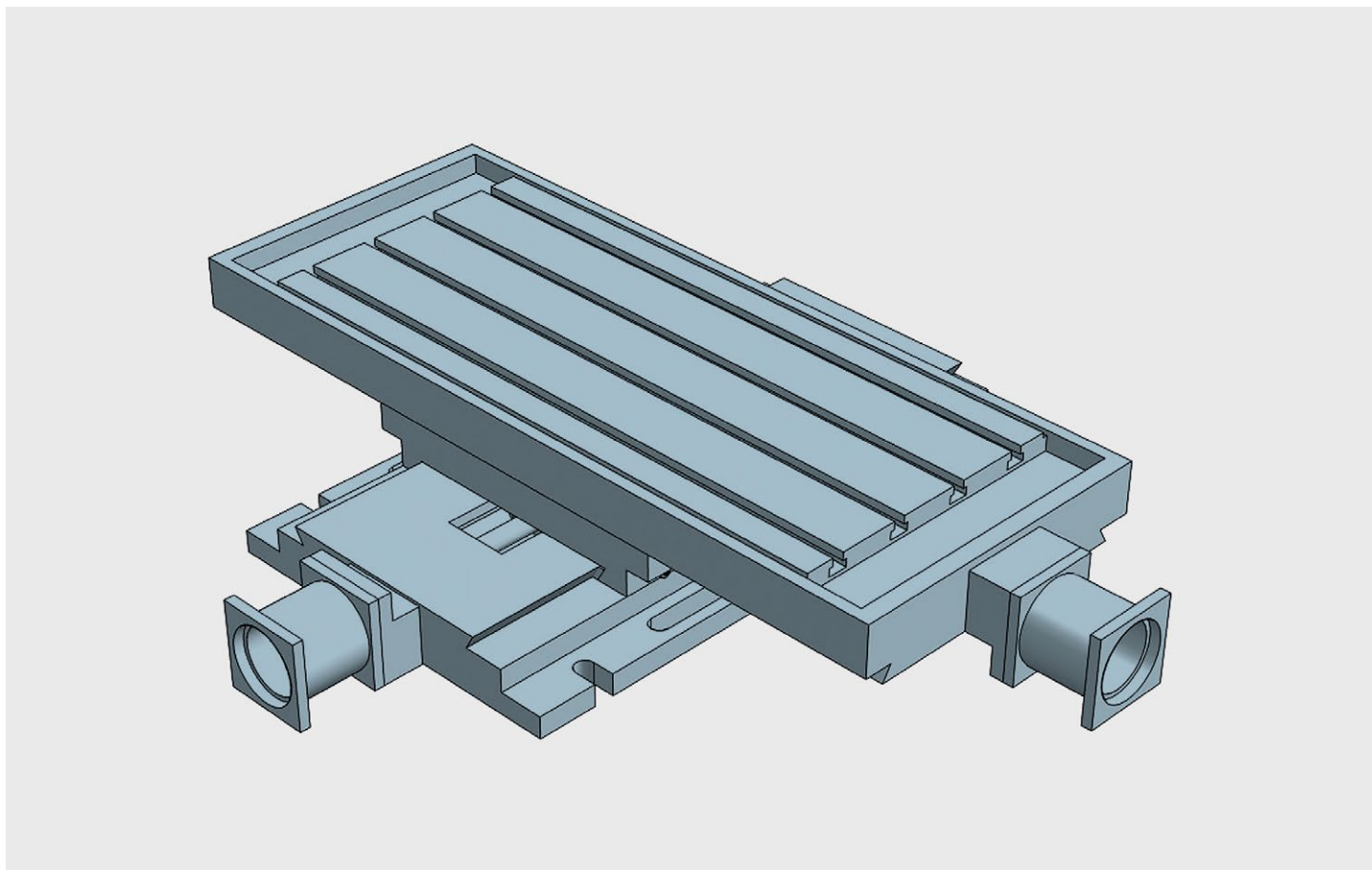
Fixed double axis automatic XY unit. All elements in stabilized cast iron GG25. All surfaces with grinded finishment. Ballbearing spindles with double nut. Dovetailed guides with turcite. Any CNC available under request

Automatic XY crosstable travelling 470x240

Technical Specifications

X - Travel [mm]	470
Y - Travel [mm]	240
Tolerance CNC [mm]	+/- 0,01
Max. weight [kg]	290
Max. work pres. [kg]	1200
Weight [kg]	86



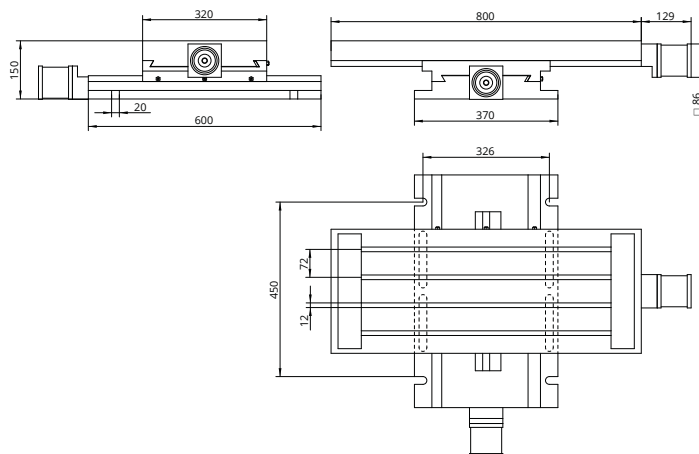


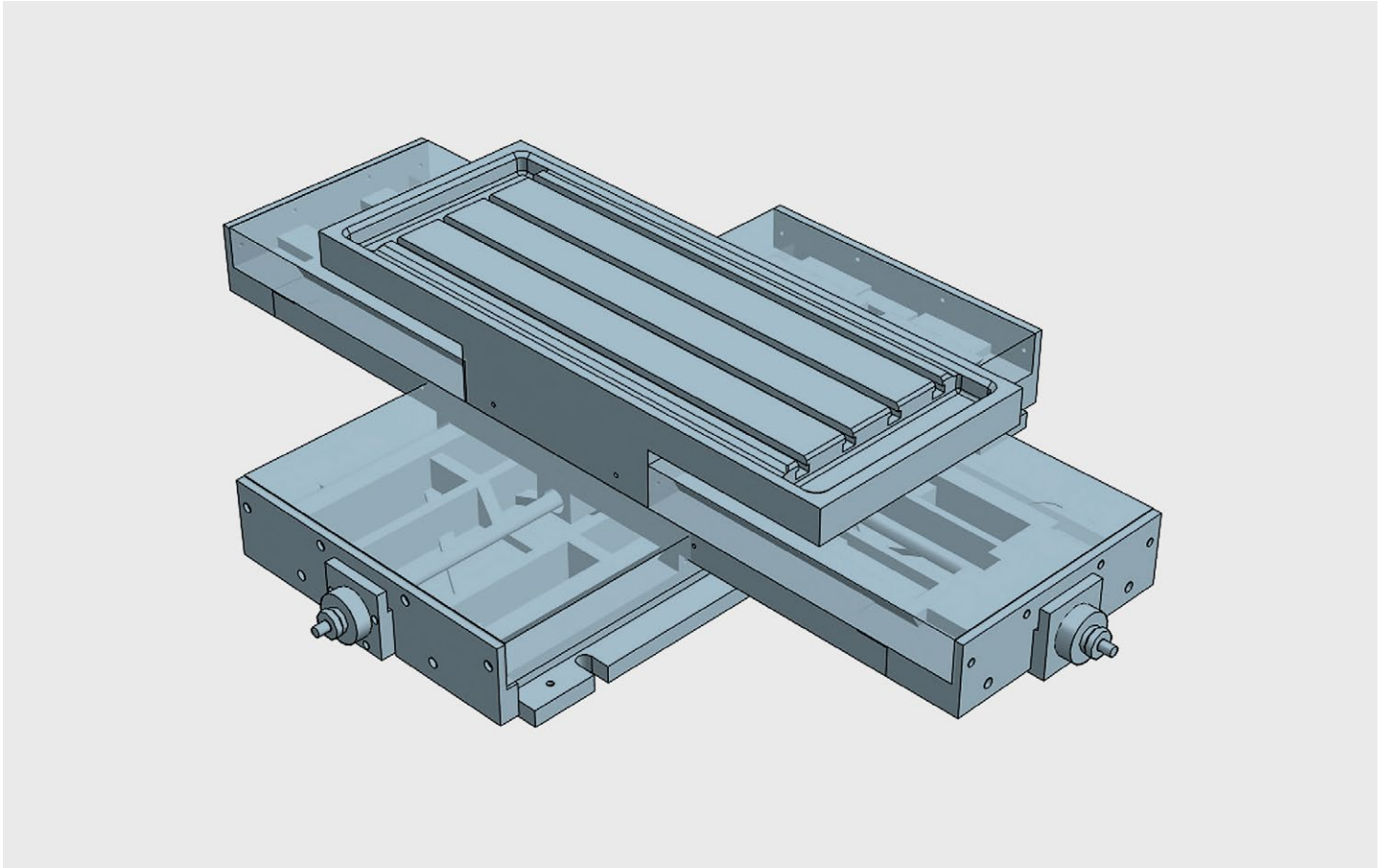
Fixed double axis automatic XY unit. All elements in stabilized cast iron GG25. All surfaces with grinded finishment. Ballbearing spindles with double nut. Dovetailed guides with turcite. Any CNC available under request

Automatic XY crosstable travelling 470x300

Technical Specifications

X - Travel [mm]	470
Y - Travel [mm]	300
Tolerance CNC [mm]	+/- 0,01
Max. weight [kg]	320
Max. work pres. [kg]	1200
Weight [kg]	122





Fixed double axis automatic XY unit. All elements in stabilized cast iron GG25. All surfaces with grinded finishment. Ballbearing spindles with double nut. Dovetailed guides with turcite. Any CNC available under request

Automatic XY crosstable travelling 700x400

Technical Specifications

X - Travel [mm]	700
Y - Travel [mm]	400
Tolerance CNC [mm]	+/- 0,01
Max. weight [kg]	900
Max. work pres. [kg]	1350
Weight [kg]	290

