

# X Coordinate tables

Using the traditional robust BAZUS design, the range of manual coordinate tables are operated by trapezoidal spindles and dovetailed guides. Made from high quality stabilized cast iron, this product range comprises single axis (X) slide units.

Robust multifunctional coordinate table with a single X axis for application as a linear unit.

Designed for precision work, the CN series of linear units is optimal for positioning, vertical drilling, horizontal drilling, welding, and any other mechanical application where precise position control is required.

The solid and robust design of the linear table allows a large number of jobs to be carried out while maintaining positioning precision and repeatability in any type of linear positioning. An industry standard and outstanding coordinate table that guarantees a long service life.

---

**Technical details:**

- Displacement by dovetails with clearance adjustment (all surfaces grinding finishment)
- Millimeter rulers and matte chrome vernier, with dial and zero adjustment.
- Trapezoidal threaded spindle with adjustable spindle nut.
- Locking brake to fix table X in its working position.

The CN series offers 8 models of coordinate tables of different sizes, from 130 to 800 mm of useful travelling, in order to adapt to the needs of the application and offer flexibility and adaptation to different uses and applications: all types of machine tools , drills, grinding machines, grinding machines, mortising machines, lathes, linear optical and laser systems, positioning of work heads, adjustment and position regulation of parts in presses, displacement for welding cutting, industrial engraving.

**BAZUS commitment:**

- The highest quality, robust and durable coordinate tables on the market.
- Tables with the finest linear positioning and without spindle-play.
- Coordinate tables made 100% in Europe.

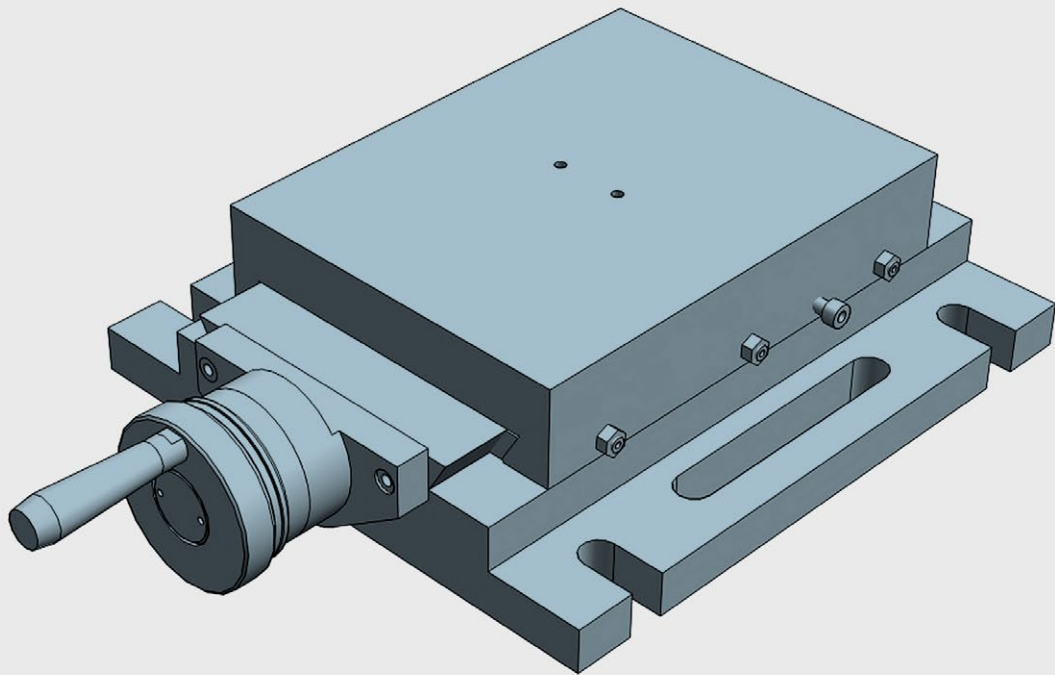
**Customized solutions:**

BAZUS, your trusted partner for high-performance positioning systems, provides the right solution for any application, specifically designed or customized to the characteristics and requirements of your activity.

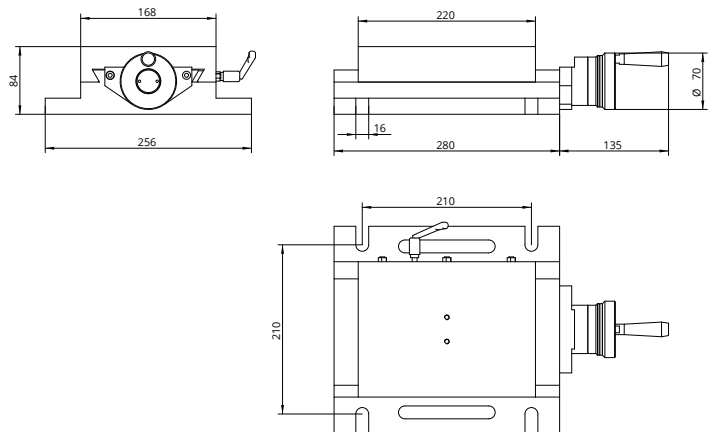
Whatever your coordinate table, thanks to more than 100 years of continuous improvement, you will have a partner who offers solutions to all your positioning and movement requirements with many different applications available worldwide.

**The first guarantee, for 5 years:**

Why settle for a 2 year warranty? At BAZUS we believe that, if the coordinate tables do not expire at this time, neither should the professional attention received. So once again we want to change the rules. 5 year guarantee.



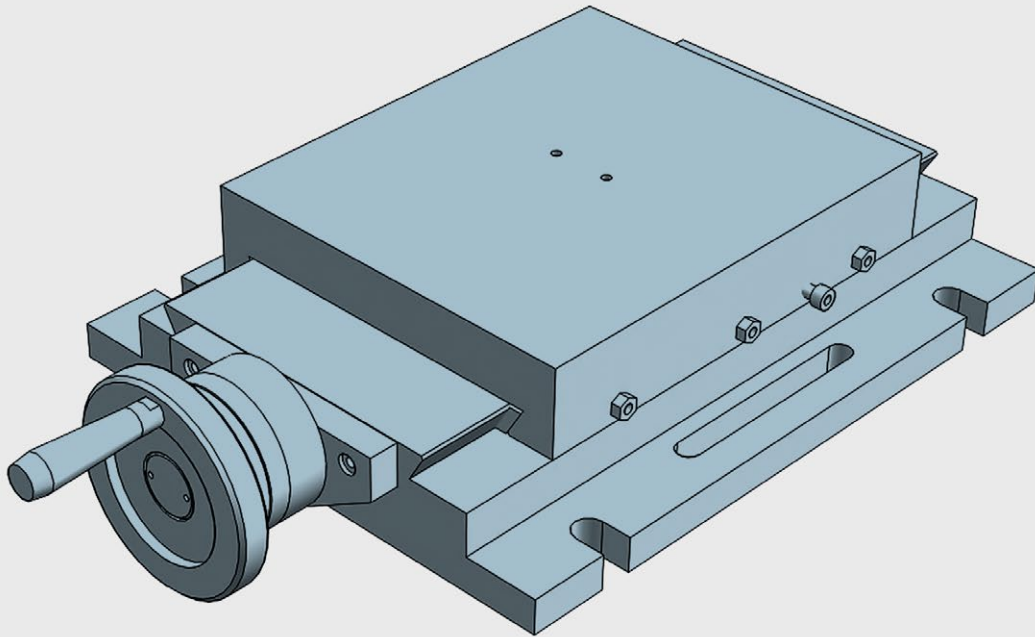
SINGLE axis table for applications with linear units. Can be used in horizontal or vertical position. All elements in stabilized cast iron GG25. All surfaces with grinded finishment. Millimetered rules in XY. Vernier/nonius matt chrome. Dial, with zero setting. Spindle with trapezoidal thread. Adjustable spindle nut. Standard lock in XY (M6 screw to block the dovetailed guides in working position)



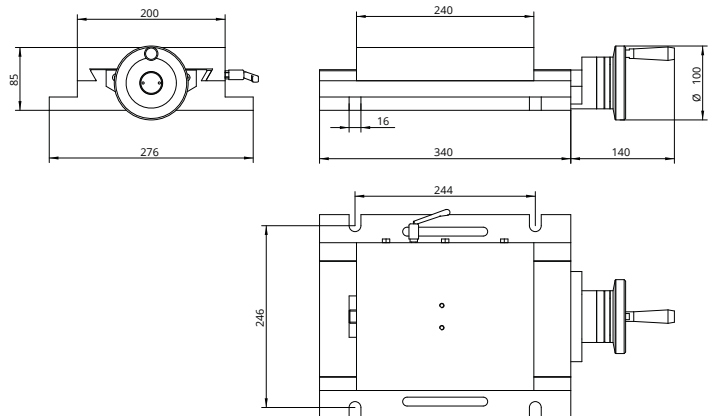
## Slide table travelling 130

### Technical Specifications

X - Travel [mm]	130
Y - Travel [mm]	-
Resolution [mm]	0,05
Max. weight [kg]	105
Max. work pres. [kg]	800
Weight [kg]	17



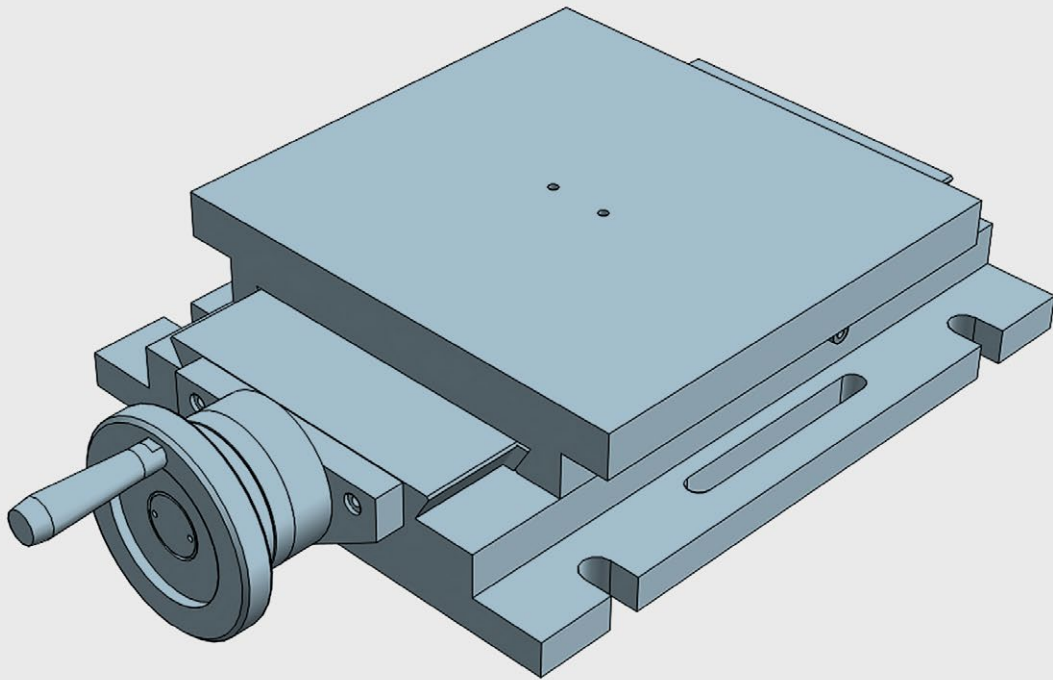
SINGLE axis table for applications with linear units. Can be used in horizontal or vertical position. All elements in stabilized cast iron GG25. All surfaces with grinded finishment. Millimetered rules in XY. Vernier/nonius matt chrome. Dial, with zero setting. Spindle with trapezoidal thread. Adjustable spindle nut. Standard lock in XY (M6 screw to block the dovetailed guides in working position)



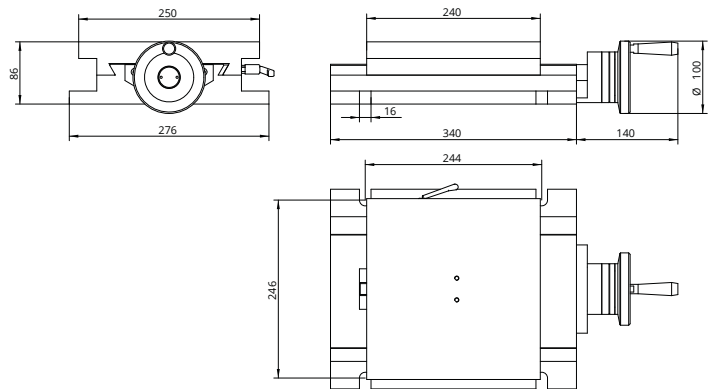
## Slide table travelling 160

### Technical Specifications

X - Travel [mm]	160
Y - Travel [mm]	-
Resolution [mm]	0,05
Max. weight [kg]	270
Max. work pres. [kg]	920
Weight [kg]	21



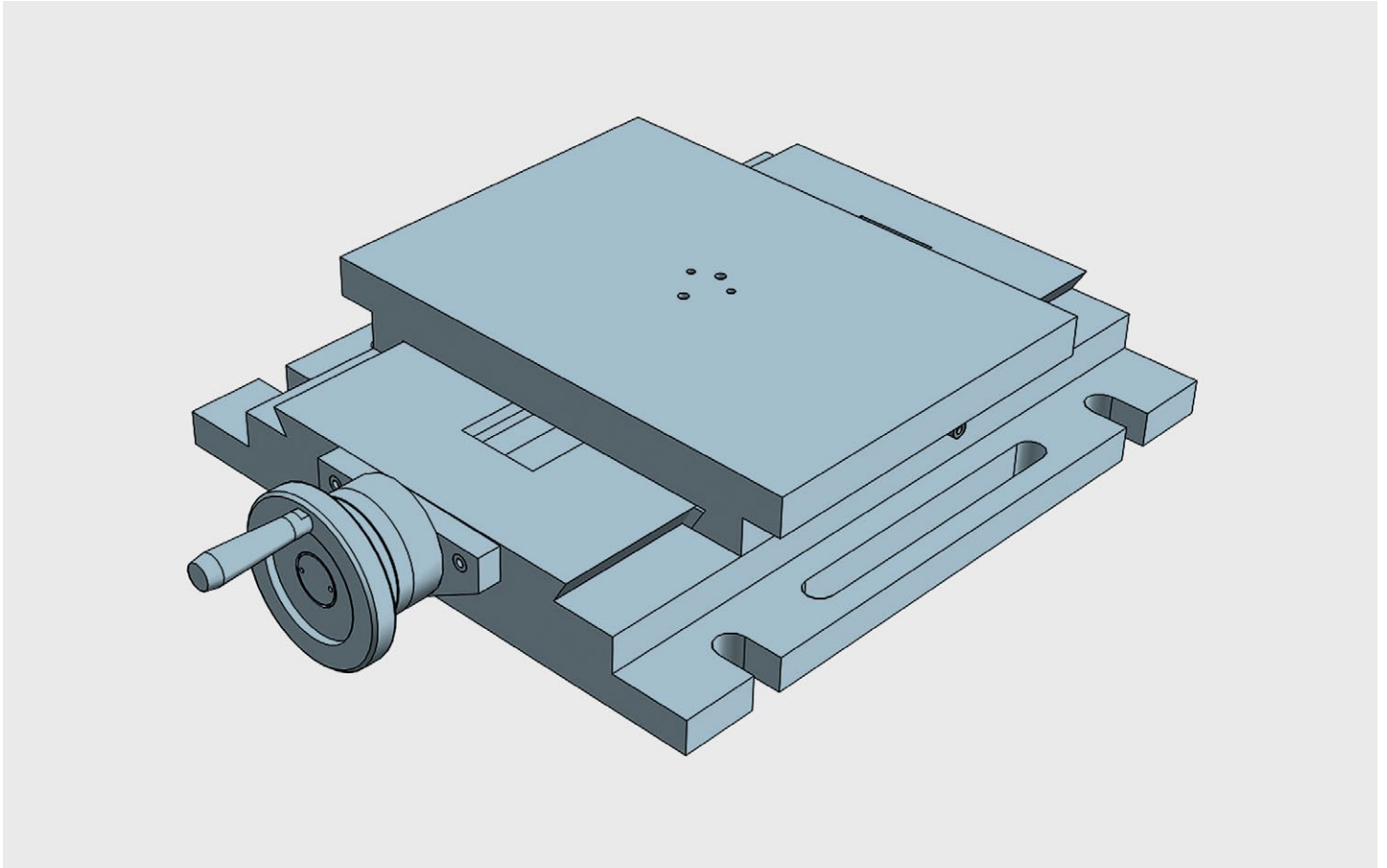
SINGLE axis table for applications with linear units. Can be used in horizontal or vertical position. All elements in stabilized cast iron GG25. All surfaces with grinded finishment. Millimetered rules in XY. Vernier/nonius matt chrome. Dial, with zero setting. Spindle with trapezoidal thread. Adjustable spindle nut. Standard lock in XY (M6 screw to block the dovetailed guides in working position)



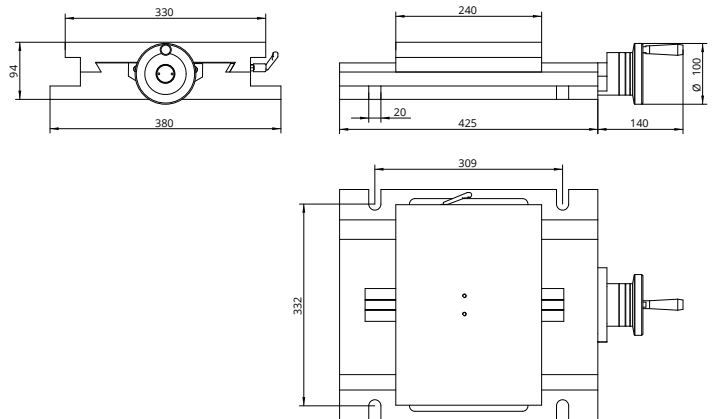
## Slide table travelling 160

### Technical Specifications

X - Travel [mm]	160
Y - Travel [mm]	-
Resolution [mm]	0,05
Max. weight [kg]	270
Max. work pres. [kg]	1000
Weight [kg]	26



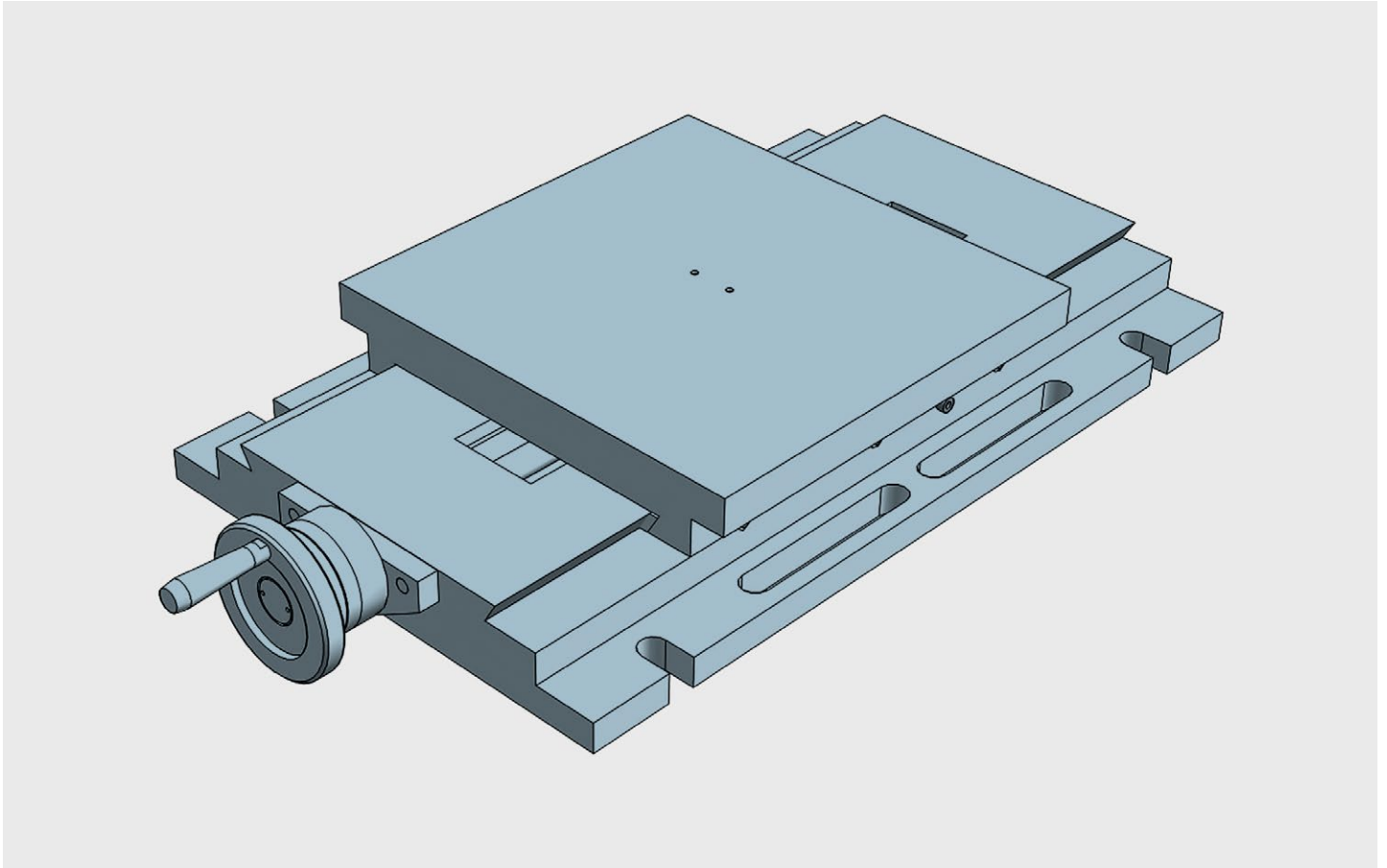
SINGLE axis table for applications with linear units. Can be used in horizontal or vertical position. All elements in stabilized cast iron GG25. All surfaces with grinded finishment. Millimetered rules in XY. Vernier/nonius matt chrome. Dial, with zero setting. Spindle with trapezoidal thread. Adjustable spindle nut. Standard lock in XY (M6 screw to block the dovetailed guides in working position)



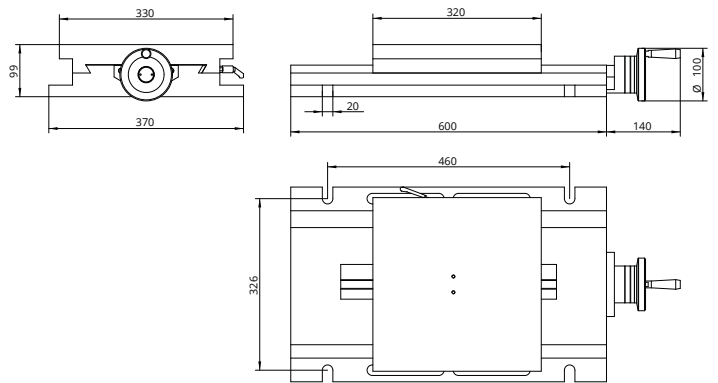
## Slide table travelling 240

### Technical Specifications

X - Travel [mm]	240
Y - Travel [mm]	-
Resolution [mm]	0,05
Max. weight [kg]	290
Max. work pres. [kg]	1250
Weight [kg]	41



SINGLE axis table for applications with linear units. Can be used in horizontal or vertical position. All elements in stabilized cast iron GG25. All surfaces with grinded finishment. Millimetered rules in XY. Vernier/nonius matt chrome. Dial, with zero setting. Spindle with trapezoidal thread. Adjustable spindle nut. Standard lock in XY (M6 screw to block the dovetailed guides in working position)



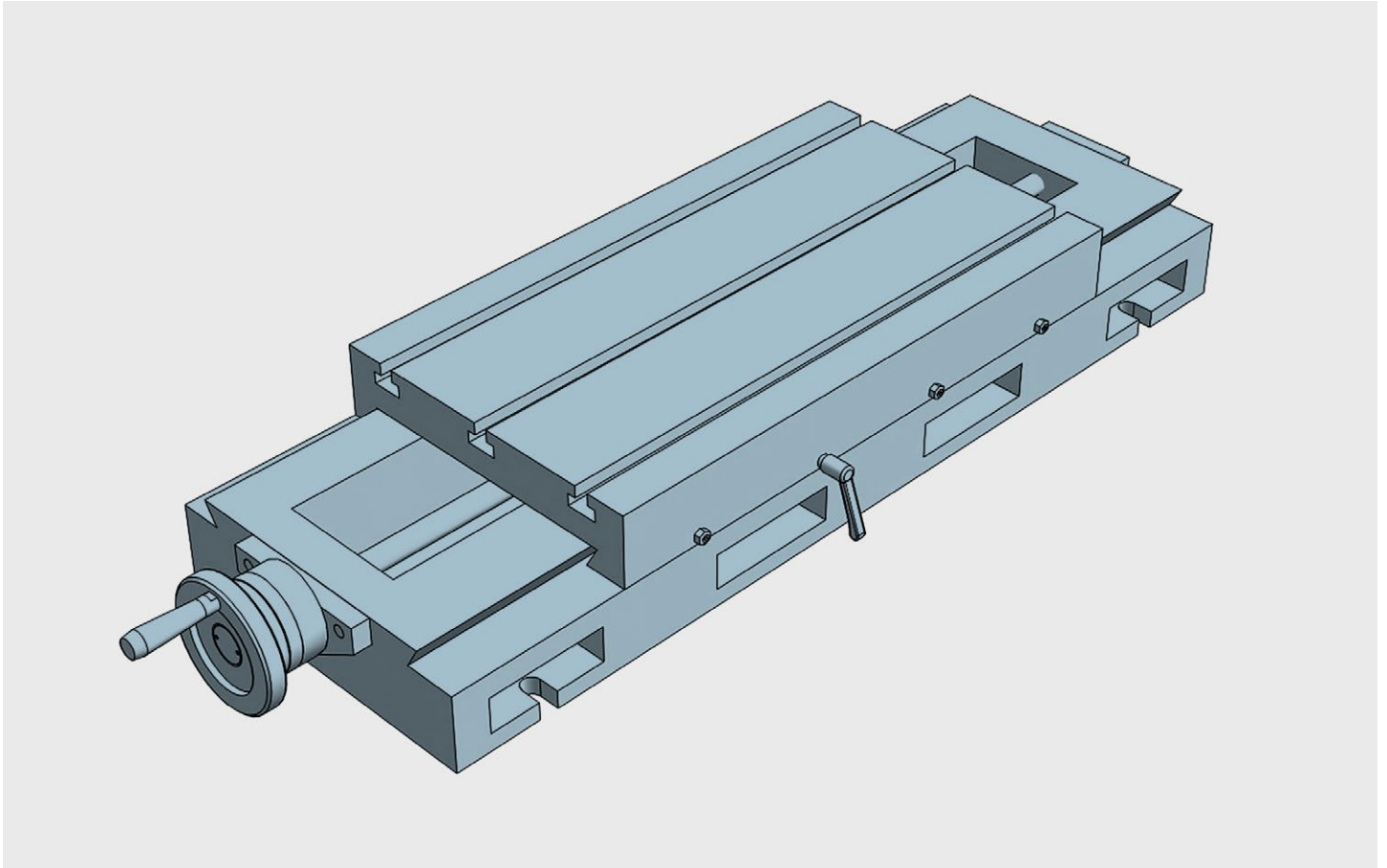
## Slide table travelling 300

### Technical Specifications

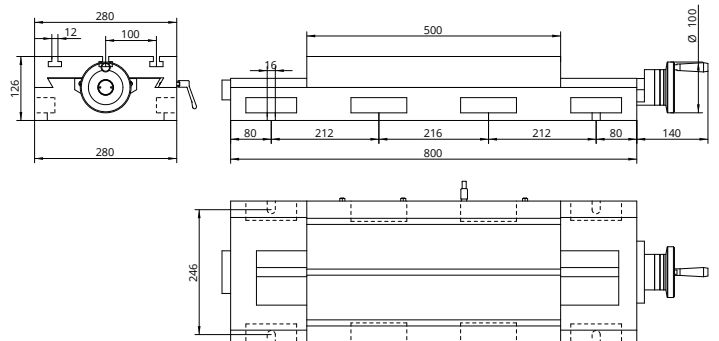
X - Travel [mm]	300
Y - Travel [mm]	-
Resolution [mm]	0,05
Max. weight [kg]	290
Max. work pres. [kg]	1300
Weight [kg]	58

# CN-300

CN, Slide unit X for heavy loads



SINGLE axis table for applications with linear units. Can be used in horizontal or vertical position. All elements in stabilized cast iron GG25. All surfaces with grinded finishment. Millimetered rules in XY. Vernier/nonius matt chrome. Dial, with zero setting. Spindle with trapezoidal thread. Adjustable spindle nut. Standard lock in XY (M6 screw to block the dovetailed guides in working position)



## Slide table travelling 300

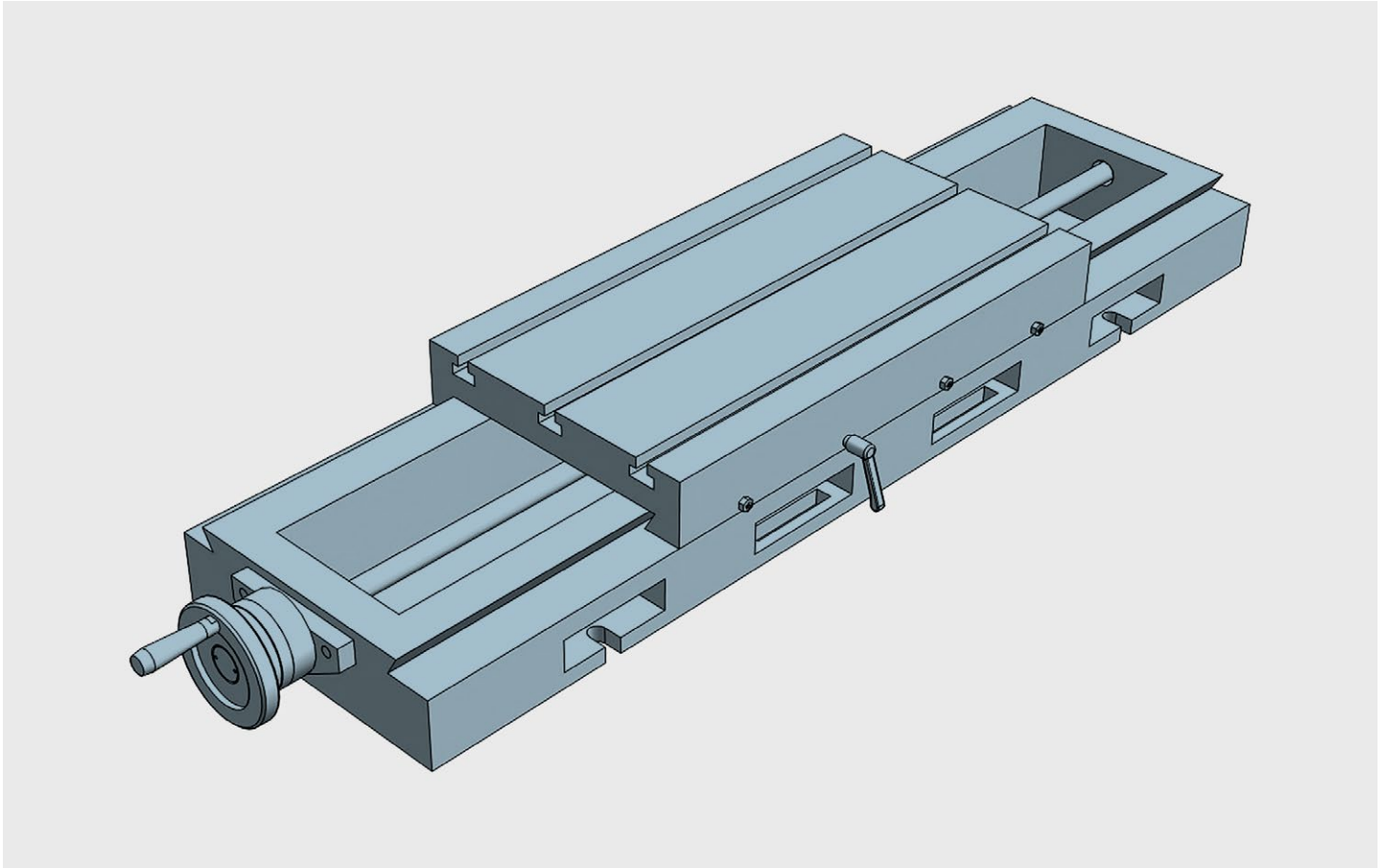
### Technical Specifications

X - Travel [mm]	300
Y - Travel [mm]	–
Resolution [mm]	0,05
Max. weight [kg]	310
Max. work pres. [kg]	1500
Weight [kg]	82

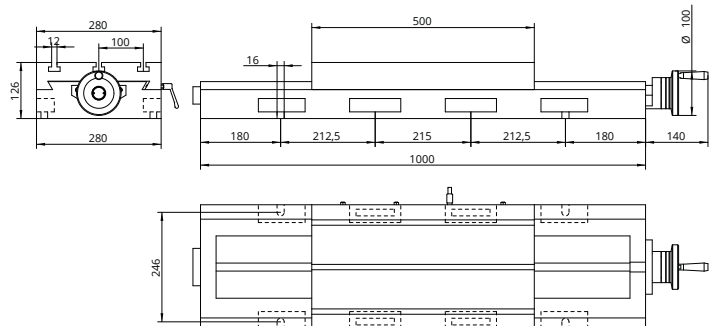


# CN-500

CN, Slide unit X for heavy loads



SINGLE axis table for applications with linear units. Can be used in horizontal or vertical position. All elements in stabilized cast iron GG25. All surfaces with grinded finishment. Millimetered rules in XY. Vernier/nonius matt chrome. Dial, with zero setting. Spindle with trapezoidal thread. Adjustable spindle nut. Standard lock in XY (M6 screw to block the dovetailed guides in working position)



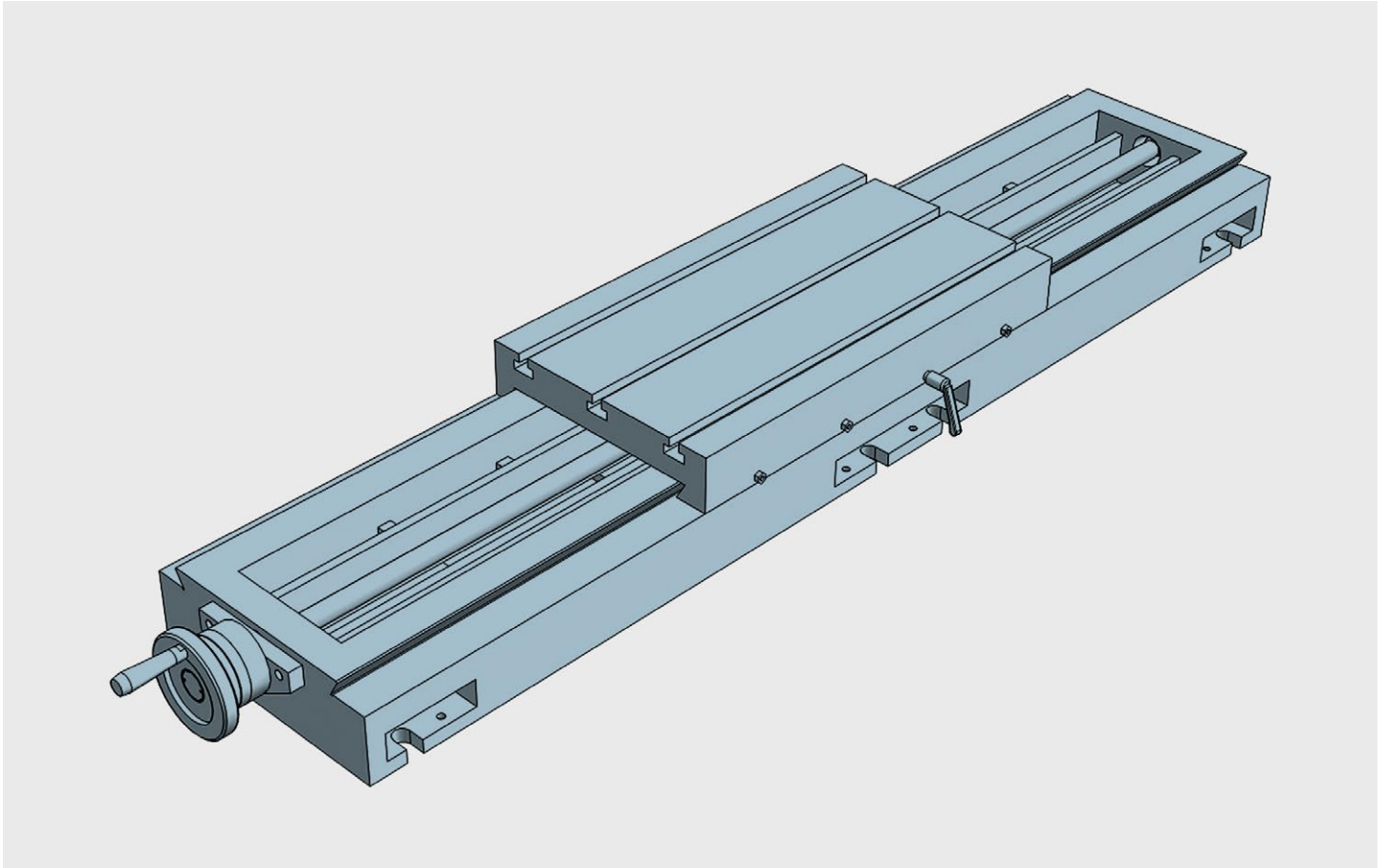
## Slide table travelling 500

### Technical Specifications

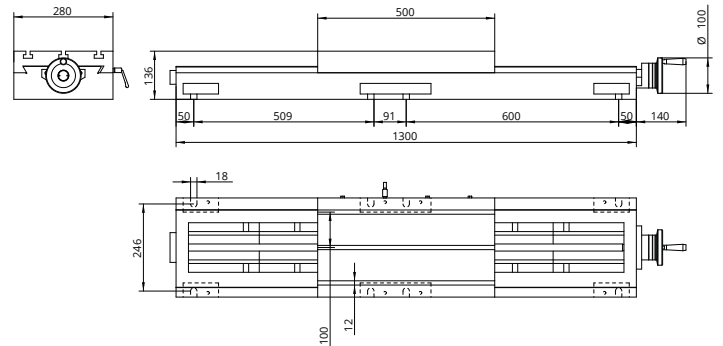
X - Travel [mm]	500
Y - Travel [mm]	-
Resolution [mm]	0,05
Max. weight [kg]	315
Max. work pres. [kg]	1600
Weight [kg]	105

# CN-1000

CN, Slide unit X for heavy loads



SINGLE axis table for applications with linear units. Can be used in horizontal or vertical position. All elements in stabilized cast iron GG25. All surfaces with grinded finishment. Millimetered rules in XY. Vernier/nonius matt chrome. Dial, with zero setting. Spindle with trapezoidal thread. Adjustable spindle nut. Standard lock in XY (M6 screw to block the dovetailed guides in working position)



## Slide table travelling 800

### Technical Specifications

X - Travel [mm]	800
Y - Travel [mm]	-
Resolution [mm]	0,05
Max. weight [kg]	320
Max. work pres. [kg]	1600
Weight [kg]	130